

HOME SHOPPING NETWORK

B2B Supplier Data Exchange

Vendor File Layout Specification

Drop Ship Purchase Order (820) – EDI Format

ANSI Standard Version 4010

VERSION 2.5 – 10/17/06

Table of contents

ANSI Standard Version 4010 1
Table of contents 2
Audience 3
Overview 3
SEGMENT ISA - INTERCHANGE CONTROL HEADER 4
SEGMENT GS - FUNCTION GROUP HEADING 6
SEGMENT ST - TRANSACTION SET HEADER 7
SEGMENT BPR-Beginning Segment for Remittance Advice..... 8
SEGMENT TRN- TRACE 9
SEGMENT DTM - DATE/TIME REFERENCE 10
SEGMENT N1 - NAME..... 11
SEGMENT N3 - ADDRESS INFORMATION 12
SEGMENT N4 - GEOGRAPHIC INFORMATION..... 13
SEGMENT ENT- Entity..... 14
SEGMENT ADX - Adjustment 15
SEGMENT NTE – Note/Special Instructions 16
SEGMENT DTM - DATE/TIME REFERENCE 17
SEGMENT REF - REFERENCE NUMBERS 18
SEGMENT REF - REFERENCE NUMBERS 19
SEGMENT REF - REFERENCE NUMBERS 20
SEGMENT RMR- Remittance Advice Item Reference 21
SEGMENT RMR- Remittance Advice Item Reference 22
SEGMENT REF - REFERENCE NUMBERS 23
SEGMENT IT1 - BASELINE ITEM DETAIL 24
SEGMENT SE - TRANSACTION SET TRAILER 26
SEGMENT GE - FUNCTIONAL GROUP TRAILER 27
SEGMENT IEA - INTERCHANGE CONTROL TRAILER 28
TRANSACTION LAYOUT 29
SAMPLE TRANSACTION..... 30

Audience

This document is written and intended for HSN drop-ship Vendors and/or users of the HSN B2B Supplier Data Exchange Services. Some knowledge of EDI transactional documents in EDI, CSV and XML formats is required.

Overview

This document is a subset of the ANSI Standard 820; the segments contained in this document are used by HSN for ***Drop Ship*** Remittance Advise. This document outlines the required EDI format for all outgoing Drop Ship Remittance Advice (820) transactional documents from the HSN B2B Supplier Data Exchange Service. The Drop Ship Remittance Advice (820) transactional type is used by HSN drop-ship vendors to download Drop Ship Remittance Advises from the HSN B2B Supplier Data Exchange Service.

Note: HSN Request that you use a ~ "7E" as a Segment terminator.

SEGMENT ISA - INTERCHANGE CONTROL HEADER

PURPOSE

To start and identify an interchange of one or more functional groups and interchange-related control segments.

EDI STANDARD SEGMENT

ISA	*	I01	*	I02	*	I03	*	I04	*	I05	*
		I06	*	I07	*	I08	*	I09	*	I10	*
		I11	*	I12	*	I13	*	I14	*	I15	~

HSN SUBSET OF EDI STANDARD SEGMENT

Same as the EDI Standard Segment

ELEMENT NUMBER	ELEMENT NAME/DESCRIPTION	ELEMENT ATTRIBUTES	COMMENTS
ISA	SEGMENT IDENTIFIER		"ISA"
I01 001	AUTHORIZATION INFORMATION QUALIFIER Code to identify the type of information in the Authorization Information.	(M IS 2/2)	"00"
I02 002	AUTHORIZATION INFORMATION Information used for additional identification or authorization of the sender or the data in the interchange.	(M AN 10/10)	blank
I03 003	SECURITY COMMUNICATION QUALIFIER Code to identify the type of information in the Security Information.	(M ID 2/2)	"00"
I04 004	SECURITY INFORMATION This is used for identifying the security information about the sender of the data in the interchange.	(M AN 10/10)	blank
I05 005	INTERCHANGE ID QUALIFIER Qualifier to designate the system/method of code structure used to designate the sender or receiver ID element being qualified.	(M ID 2/2)	HSN interchange qualifier. "01"
I06 006	INTERCHANGE SENDER ID Identification code published by the sender for other parties to use as the receiver ID to route data to them. The sender always codes this number in the sender ID element.	(M ID 15/15)	HSN interchange ID. "076902113" "7275728585" (for HSN.com & Short Shop) "076902113T" (for testing) "7275728585T" (for Hsn.com & Short Shop)

DROP SHIP

I05	007	INTERCHANGE ID QUALIFIER Qualifier to designate the system/method of code structure used to designate the sender or receiver ID element being qualified.	(M ID 2/2)	Your interchange qualifier.
I07	008	INTERCHANGE RECEIVER ID Identification code published by the sender for other parties to use as the receiver ID to route data to them.	(M ID 15/15)	Your interchange ID.
I08	009	INTERCHANGE DATE Date of the interchange.	(M DT 6/6)	Interchange creation date (YYMMDD)
I09	010	INTERCHANGE TIME Time of the interchange	(M TM 4/4)	Interchange creation time. HHMM
I10	011	INTERCHANGE CONTROL STANDARDS IDENTIFIER Code to identify the agency responsible for the control standard used..	(M ID 1/1)	“ U “
I11	012	INTERCHANGE CONTROL VERSION NUMBER Version number covers the interchange control segments and functional group control segments.	((M ID 5/5)	“ 00401 “
I12	013	INTERCHANGE CONTROL NUMBER The number uniquely identifies the interchange data to the sender.	(M N0 9/9)	HSN sequential number
I13	014	ACKNOWLEDGMENT REQUESTED Code sent to request an interchange acknowledgment.	(M ID 1/1)	“ 0 “
I14	015	TEST INDICATOR Code to indicate whether data enclosed by this interchange envelope is test or production.	(M ID 1/1)	“ P “ = production “ T “ = test
I15	016	SUBELEMENT SEPARATOR	(M AN 1/1)	“ > ”

SEGMENT GS - FUNCTION GROUP HEADING

PURPOSE

To indicate the beginning of a functional group and to provide control information.

EDI STANDARD SEGMENT

GS	*	479	*	142	*	124	*	29	*	30	*	28	*
		455	*	480	~								

HSN SUBSET OF EDI STANDARD SEGMENT

Same as the EDI Standard Segment.

ELEMENT NUMBER	ELEMENT NAME/DESCRIPTION	ELEMENT ATTRIBUTES	COMMENTS
GS	SEGMENT IDENTIFIER		“GS”
479 001	FUNCTIONAL IDENTIFIER CODE Code identifying a group of application related Transaction Sets.	(M ID 2/2)	“ RA “
142 002	APPLICATION SENDER’S CODE Code identifying sending party.	(M AN 2/15)	HSN interchange ID. “ 076902113 “ “076902113T” (for testing)
124 003	APPLICATION RECEIVER’S CODE Code identifying receiving party.	(M AN 2/15)	Your interchange ID.
29 004	GROUP DATE Date sender generated a group of transaction sets.	(M DT 8/8)	System date when group was created (CCYYMMDD).
30 005	GROUP TIME Time when the sender generated a functional group of transaction sets	(M TM 4/4)	Local time when group was generated (HHMM).
28 006	GROUP CONTROL NUMBER Assigned number originated and maintained by the sender.	(M ID 1/9)	HSN sequential number
455 007	RESPONSIBLE AGENCY CODE. Code used in conjunction with Data Element 480 to identify the issuer of the standard.	(M ID 1/2)	“ X “ for ASC X12.
480 008	VERSION/RELEASE/INDUSTRY ID CODE Version and release information of the EDI standard being used.	(M ID 1/12)	“ 004010 “

SEGMENT ST - TRANSACTION SET HEADER

PURPOSE

To indicate the start of a transaction set and to assign a control number.

EDI STANDARD SEGMENT

ST * 143 * 349 ~

HSN SUBSET OF EDI STANDARD SEGMENT

Same as EDI Standard Segment above.

ELEMENT NUMBER	ELEMENT NAME/DESCRIPTION	ELEMENT ATTRIBUTES	COMMENTS
ST	SEGMENT IDENTIFIER		"ST"
143 001	TRANSACTION SET IDENTIFIER CODE Code uniquely identifying a transaction set.	(M AN 3/3)	"820"
329 002	TRANSACTION SET CONTROL NUMBER Identifying control number assigned by the originator for a transaction set.	(M AN 4/9)	Unique control number identifying this transmission.

SEGMENT BPR-Beginning Segment for Remittance Advice

PURPOSE

To indicate the beginning of a Remittance Advice Transaction Set and total payment amount.

EDI STANDARD SEGMENT

BPR	*	305	*	782	*	478	*	591	*	812	*
		506	*	507	*	569	*	508	*	509	*
		510	*	506	*	507	*	569	*	508	*
		373	*	1048	*	506	*	507	*	569	*
		508	~								

HSN SUBSET OF EDI STANDARD SEGMENT

BPR	*	305	*	782	*	478	*	591	*	812	~
-----	---	-----	---	-----	---	-----	---	-----	---	-----	---

ELEMENT NUMBER	ELEMENT NAME/DESCRIPTION SEGMENT IDENTIFIER	ELEMENT ATTRIBUTES	COMMENTS
BPR			"BPR"
305 001	TRANSACTION HANDLING CODE	(M ID 1/2)	"I" Remittance Only
782 002	TOTAL PAYMENT AMOUNT	(M R 1/18)	
478 003	CREDIT/DEBIT FLAG	(M ID 1/1)	"C"
591 004	PAYMENT METHOD CODE	(M ID 3/3)	"CHK"
812 005	PAYMENT FORMAT CODE	(O ID 1/10)	"PBC"

SEGMENT TRN- TRACE

PURPOSE

To uniquely identify a transaction to an application.

EDI STANDARD SEGMENT

TRN * 481 * 127 * 509 * 127 ~

HSN SUBSET OF EDI STANDARD SEGMENT

TRN * 481 * 127 ~

Same as EDI Standard Segment.

ELEMENT NUMBER	ELEMENT NAME/DESCRIPTION	ELEMENT ATTRIBUTES	COMMENTS
TRN	SEGMENT IDENTIFIER		"TRN"
481 001	TRACE TYPE CODE Current Transaction Trace Numbers	(M ID 1/2)	"1"
127 002	REFERENCE IDENTIFICATION HSN CHECK NUMBER	(M AN 1/30)	

SEGMENT DTM - DATE/TIME REFERENCE

PURPOSE

To specify pertinent dates and times.

EDI STANDARD SEGMENT

DTM * 374 373 * 337 * 623 * 624 ~

HSN SUBSET OF EDI STANDARD SEGMENT

DTM * 374 * 373 ~

ELEMENT NUMBER	ELEMENT NAME/DESCRIPTION	ELEMENT ATTRIBUTES	COMMENTS
DTM	SEGMENT IDENTIFIER		"DTM"
374 001	DATE/TIME QUALIFIER Code specifying type of date or time, or both date and time.	(M ID 3/3)	" 097 "
373 002	DATE Payment Date- "CCYYMMDD"	(C DT 8/8)	

SEGMENT N1 - NAME

PURPOSE

To identify a party by type of organization, name and code.

EDI STANDARD SEGMENT

N1 * 98 * 93 * 66 * 67 ~

HSN SUBSET OF EDI STANDARD SEGMENT

N1	*	98	*	93	*	66	*	67	~
----	---	----	---	----	---	----	---	----	---

ELEMENT NUMBER	ELEMENT NAME/DESCRIPTION	ELEMENT ATTRIBUTES	COMMENTS
N1	SEGMENT IDENTIFIER		"N1"
98 001	ENTITY IDENTIFIER CODE Code identifying an organizational entity, a physical location, or an individual.	(M ID 2/3)	"VN"
93 002	NAME Free form name.	(C AN 1/60)	
66 003	IDENTIFICATION CODE QUALIFIER – assigned by buyer	(C AN 2/4)	"92"
67 004	IDENTIFICATION CODE HSN Internal Vendor Number	(C ID 6/6)	

SEGMENT N3 - ADDRESS INFORMATION

PURPOSE

To specify the location of the named party.

EDI STANDARD SEGMENT

N3

 *

166

 *

166

 ~

HSN SUBSET OF EDI STANDARD SEGMENT

Same as EDI Standard Segment.

ELEMENT NUMBER	ELEMENT NAME/DESCRIPTION	ELEMENT ATTRIBUTES	COMMENTS
N3	SEGMENT IDENTIFIER		"N3"
166 001	ADDRESS INFORMATION Address information.	(M AN 1/55)	
166 002	ADDRESS INFORMATION Address information.	(O AN 1/55)	

SEGMENT N4 - GEOGRAPHIC INFORMATION

PURPOSE

To specify the geographic location of the named party.

EDI STANDARD SEGMENT

N4	*	19	*	156	*	116	*
		26	*	309	*	310	~

HSN SUBSET OF EDI STANDARD SEGMENT

N4	*	19	*	156	*	116	~
----	---	----	---	-----	---	-----	---

ELEMENT NUMBER	ELEMENT NAME/DESCRIPTION	ELEMENT ATTRIBUTES	COMMENTS
N4	SEGMENT IDENTIFIER		"N4"
19 001	CITY NAME Free form text for city name.	(C AN 2/30)	
156 002	STATE OR PROVINCE CODE Code as defined by appropriate gov't agency.	(O ID 2/2)	
116 003	POSTAL CODE Code defining postal zone code (zip code for the United States).	(O ID 3/15)	

SEGMENT ENT- Entity

PURPOSE

To designate the entities which are parties to a transaction.

EDI STANDARD SEGMENT

ENT	*	554	*	98	*	66	*	67	*	98	*
		66	*	67	*	128	*	127	~		

HSN SUBSET OF EDI STANDARD SEGMENT

ENT	*	554	~
-----	---	-----	---

ELEMENT NUMBER	ELEMENT NAME/DESCRIPTION SEGMENT IDENTIFIER	ELEMENT ATTRIBUTES	COMMENTS
ENT			"ENT"
554 001	Assigned Number. Number assigned for differentiation within a transaction set.	(M NO 1/6)	

SEGMENT ADX - Adjustment

PURPOSE

To convey accounts payable adjustment information, including credit memos.

EDI STANDARD SEGMENT

ADX * 782 * 426 * 128 * 127 ~

HSN SUBSET OF EDI STANDARD SEGMENT

ADX * 782 * 426 ~

ELEMENT NUMBER	ELEMENT NAME/DESCRIPTION SEGMENT IDENTIFIER	ELEMENT ATTRIBUTES	COMMENTS
ADX			"ADX"
782 001	Monetary Amount Amount of Credit	(M R 1/18)	
426 002	Adjustment Reason Code	(M ID 2/2)	"CM"

SEGMENT NTE – Note/Special Instructions

PURPOSE

To transmit information in a free-form format, if necessary, for comment or special instructions.

EDI STANDARD SEGMENT

NTE * 363 * 352

HSN SUBSET OF EDI STANDARD SEGMENT

NTE * 363 * 352

ELEMENT NUMBER	ELEMENT NAME/DESCRIPTION SEGMENT IDENTIFIER	ELEMENT ATTRIBUTES	COMMENTS
NTE			“NTE”
363 001	Note Reference Code	(O ID 3/3)	“ORI”
352 002	Description Return Reason	(M AN 1/80)	

SEGMENT DTM - DATE/TIME REFERENCE

PURPOSE

To specify pertinent dates and times.

EDI STANDARD SEGMENT

DTM * 374 373 * 337 * 623 * 624 ~

HSN SUBSET OF EDI STANDARD SEGMENT

DTM * 374 * 373 ~

ELEMENT NUMBER	ELEMENT NAME/DESCRIPTION SEGMENT IDENTIFIER	ELEMENT ATTRIBUTES	COMMENTS
DTM			"DTM"
374 001	DATE/TIME QUALIFIER Code specifying type of date or time, or both date and time.	(M ID 3/3)	" 011 "
373 002	DATE CREATION DATE- "CCYYMMDD"	(C DT 8/8)	

SEGMENT REF - REFERENCE NUMBERS

PURPOSE

To specify identifying numbers.

EDI STANDARD SEGMENT

REF * 128 * 127 * 352 ~

HSN SUBSET OF EDI STANDARD SEGMENT

REF * 128 * 127 ~

ELEMENT NUMBER	ELEMENT NAME/DESCRIPTION	ELEMENT ATTRIBUTES	COMMENTS
REF	SEGMENT IDENTIFIER		“REF”
128 001	REFERENCE NUMBER QUALIFIER Code qualifying the reference number.	(M ID 2/3)	“FZ”
127 002	REFERENCE NUMBER Specified by the Reference Number Qualifier. “HSN Internal Invoice Number”	(C AN 1/30)	

SEGMENT REF - REFERENCE NUMBERS

PURPOSE

To specify identifying numbers.

EDI STANDARD SEGMENT

REF * 128 * 127 * 352 ~

HSN SUBSET OF EDI STANDARD SEGMENT

REF * 128 * 127 ~

ELEMENT NUMBER	ELEMENT NAME/DESCRIPTION	ELEMENT ATTRIBUTES	COMMENTS
REF	SEGMENT IDENTIFIER		"REF"
128 001	REFERENCE NUMBER QUALIFIER Code qualifying the reference number.	(M ID 2/3)	"VV" (Please note that this ID is using the letter V twice.)
127 002	REFERENCE NUMBER Specified by the Reference Number Qualifier. "HSN VOUCHER ID"	(C AN 1/30)	

SEGMENT REF - REFERENCE NUMBERS

PURPOSE

To specify identifying numbers.

EDI STANDARD SEGMENT

REF * 128 * 127 * 352 ~

HSN SUBSET OF EDI STANDARD SEGMENT

REF * 128 * 127 ~

ELEMENT NUMBER	ELEMENT NAME/DESCRIPTION	ELEMENT ATTRIBUTES	COMMENTS
REF	SEGMENT IDENTIFIER		“REF”
128 001	REFERENCE NUMBER QUALIFIER Code qualifying the reference number.	(M ID 2/3)	“PD”
127 002	REFERENCE NUMBER QUALIFIER Specified by the Reference Number Qualifier. “Promotion Code”	(C AN 1/30)	

SEGMENT RMR- Remittance Advice Item Reference

PURPOSE

To specify remittance details.

EDI STANDARD SEGMENT

RMR	*	128	*	127	*	482	*	782	*
		782	*	782	*	426	*		*
		782	~						

HSN SUBSET OF EDI STANDARD SEGMENT

RMR	*	128	*	127	*	482	*	782	*
		782	*	782	~				

ELEMENT NUMBER	ELEMENT NAME/DESCRIPTION	ELEMENT ATTRIBUTES	COMMENTS
RMR	SEGMENT IDENTIFIER		"RMR"
128 001	Reference Identification Qualifier	(C ID 2/3)	"PO"
127 002	Reference Identification HSN PURCHASE ORDER NUMBER	(C AN 1/30)	
482 003	Payment Action Code	(O ID 2/2)	Not Used
782 004	Monetary Amount Payment Amount (net Amount)	(O R 1/18)	
782 005	Monetary Amount Paid Amount Gross- before Discounts or Credits	(O R 1/18)	
782 006	Monetary Amount Discount Amount	(O R 1/18)	

SEGMENT RMR- Remittance Advice Item Reference

PURPOSE

To specify remittance details.

EDI STANDARD SEGMENT

RMR	*	128	*	127	*	482	*	782	*
		782	*	782	*	426	*		*
		782	~						

HSN SUBSET OF EDI STANDARD SEGMENT

RMR	*	128	*	127	~
-----	---	-----	---	-----	---

ELEMENT NUMBER	ELEMENT NAME/DESCRIPTION SEGMENT IDENTIFIER	ELEMENT ATTRIBUTES	COMMENTS
RMR			"RMR"
128 001	Reference Identification Qualifier	(C ID 2/3)	"IV"
127 002	Reference Identification "VENDOR INVOICE NUMBER"	(C AN 1/30)	If exists
482 003	Payment Action Code	(O ID 2/2)	Not Used
782 004	Monetary Amount Payment Amount (net Amount)	(O R 1/18)	
782 005	Monetary Amount Paid Amount Gross- before Discounts or Credits	(O R 1/18)	
782 006	Monetary Amount Discount Amount	(O R 1/18)	

SEGMENT REF - REFERENCE NUMBERS

PURPOSE

To specify identifying numbers.

EDI STANDARD SEGMENT

REF * 128 * 127 * 352 ~

HSN SUBSET OF EDI STANDARD SEGMENT

REF * 128 * 127 ~

ELEMENT NUMBER	ELEMENT NAME/DESCRIPTION SEGMENT IDENTIFIER	ELEMENT ATTRIBUTES	COMMENTS
REF			"REF"
128 001	REFERENCE NUMBER QUALIFIER Code qualifying the reference number.	(M ID 2/3)	"ZZ"
127 002	REFERENCE NUMBER Reference number or identification number as defined for a particular Transaction Set. or as specified by the Reference Number Qualifier.	(C AN 1/30)	
352 003	DESCRIPTION	(C AN 1/80)	Contains Manually entered notes from Accounts Payable.

SEGMENT IT1 - BASELINE ITEM DETAIL

PURPOSE

To specify basic and most frequently used line item data.

EDI STANDARD SEGMENT

IT1	*	350	*	358	*	355	*	212	*	639	*
		235	*	234	*	235	*	234	*	235	*
		234	*	235	*	234	*	235	*	234	*
		235	*	234	*	235	*	234	*	235	*
		234	*	235	*	234	*	235	*	234	~

HSN SUBSET OF EDI STANDARD SEGMENT

IT1	*	350	*	358	*	355	*	212	*	
		639	*	235	*	234	*	235	*	234

ELEMENT NUMBER	ELEMENT NAME/DESCRIPTION	ELEMENT ATTRIBUTES	COMMENTS
IT1	SEGMENT IDENTIFIER		“ IT1 “
350 001	ASSIGNED IDENTIFICATION Alphanumeric characters assigned for differentiation within a transaction set.	(O AN 1/11)	Not Used
358 002	QUANTITY ORDERED	(M R 1/10)	Not Used
355 003	UNIT OF MEASUREMENT CODE Code specifying the units in which a value is being expressed.	(M ID 2/2)	Not Used
212 004	UNIT PRICE Price per unit of product.	(M R 1/14)	Not Used
639 005	BASIS OF UNIT PRICE CODE Code identifying the type of unit price for an item.	(O ID 2/2)	Not Used
235 006	PRODUCT/SERVICE ID QUALIFIER Code identifying type of descriptive number in Product ID.	(M ID 2/2)	HSN Mandatory “IT”

		<i>DROP SHIP</i>	
234	007	PRODUCT/SERVICE ID Identifying number for a product or service.	(M AN 1/30) HSN Mandatory HSN item number.
235	008	PRODUCT/SERVICE ID QUALIFIER Code identifying type of descriptive number in Product ID.	(O ID 2/2) Not Used
234	009	PRODUCT/SERVICE ID Identifying number for a product..	(O AN 1/30) Not Used
235	010	PRODUCT/SERVICE ID QUALIFIER	(O ID 2/2) Not Used
234	011	PRODUCT/SERVICE ID	(C AN 1/30) Not Used
235	012	PRODUCT/SERVICE ID QUALIFIER	(C ID 2/2) Not Used
234	013	PRODUCT/SERVICE ID	(C AN 1/30) Not Used
235	014	PRODUCT/SERVICE ID QUALIFIER	(O ID 2/2) Not Used
234	015	PRODUCT/SERVICE ID	(C AN 1/30) Not Used
235	016	PRODUCT/SERVICE ID QUALIFIER	(O ID 2/2) Not Used
234	017	PRODUCT/SERVICE ID	(C AN 1/30) Not Used
235	018	PRODUCT/SERVICE ID QUALIFIER	(O ID 2/2) Not Used
234	019	PRODUCT/SERVICE ID	(C AN 1/30) Not Used
235	020	PRODUCT/SERVICE ID QUALIFIER	(O ID 2/2) Not Used
234	021	PRODUCT/SERVICE ID	(C AN 1/30) Not Used
235	022	PRODUCT/SERVICE ID QUALIFIER	(O ID 2/2) Not Used
234	023	PRODUCT/SERVICE ID	(C AN 1/30) Not Used
235	024	PRODUCT/SERVICE ID QUALIFIER	(O ID 2/2) Not Used
234	025	PRODUCT/SERVICE ID	(C AN 1/30) Not Used

SEGMENT SE - TRANSACTION SET TRAILER

PURPOSE

To indicate the end of the transaction set and provide the count of the transmitted segments (including the beginning (ST) and the ending (SE) segments).

EDI STANDARD SEGMENT

SE * 96 * 329 ~

HSN SUBSET OF EDI STANDARD SEGMENT

Same as the EDI Standard Segment.

ELEMENT NUMBER	ELEMENT NAME/DESCRIPTION SEGMENT IDENTIFIER	ELEMENT ATTRIBUTES	COMMENTS
SE			“SE”
96 001	NUMBER OF INCLUDED SEGMENTS Total number of segments included in a transaction set including ST and SE segments.	(M NO 1/6)	Number of segments
329 002	TRANSACTION SET CONTROL NUMBER Identifying control number that must be unique within the transaction set functional group assigned by the originator for a transaction set.	(M AN 4/9)	HSN Our sequential number

SEGMENT GE - FUNCTIONAL GROUP TRAILER

PURPOSE

To indicate the end of a functional group and to provide control.

EDI STANDARD SEGMENT

GE * 97 * 28 ~

HSN SUBSET OF EDI STANDARD SEGMENT

Same as EDI Standard Segment

ELEMENT NUMBER	ELEMENT NAME/DESCRIPTION SEGMENT IDENTIFIER	ELEMENT ATTRIBUTES	COMMENTS
GE			“ GE “
97 001	NUMBER OF TRANSACTION SETS INCLUDED. Count of ST segments within the Group.	(M N0 1/6)	Total number of transaction sets included in the GS - GE group.
28 002	GROUP CONTROL NUMBER Assigned number originated and maintained by the sender.	(M N0 1/9)	Same number as in GS segment (data element 06)

SEGMENT IEA - INTERCHANGE CONTROL TRAILER

PURPOSE

To define the end of an interchange of one or more functional groups and interchange-related control segments.

EDI STANDARD SEGMENT

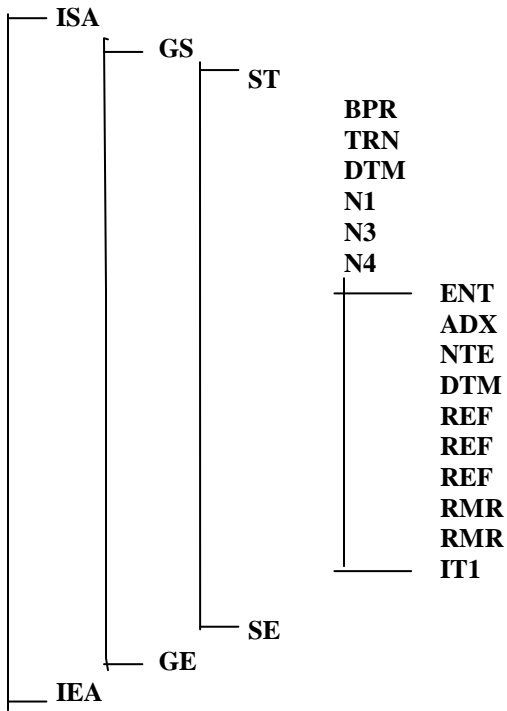
IEA * I16 * I12 ~

HSN SUBSET OF EDI STANDARD SEGMENT

Same as EDI Standard Segment.

ELEMENT NUMBER	ELEMENT NAME/DESCRIPTION SEGMENT IDENTIFIER	ELEMENT ATTRIBUTES	COMMENTS
IEA			“ IEA “
I16 001	NUMBER OF INCLUDED FUNCTIONAL GROUPS A count of the number of included groups included in a transmission.	(M N0 1/5)	Count of the GS segments in the transmission.
I12 002	INTERCHANGE CONTROL NUMBER Number that uniquely identifies the interchange data. It is assigned by the sender.	(M N0 9/9)	Same number as in the ISA segment (data element 13)

TRANSACTION LAYOUT



SAMPLE TRANSACTION

ISA*00* *00* *01*076902113 *01*060530144
*060505*0934*U*00401*000000005*0*T*>
GS*RA*076902113*060530144*20060505*0934*5*X*004010
ST*820*0001
BPR*I*35493.5*C*CHK*PBC
TRN*1*0002088
DTM*097*20000501
N1*SU*MUSTEK INC*92*023887
N3*121 WATERWORKS WAY*SUITE 100
N4*IRVINE*CA*92618
ENT*1
DTM*011*20000405
REF*FZ*DCC0423572403-0
REF*VV*0001D
RMR*PO*422115487**125*125*0
RMR*IV*114114
IT1*****IT*00585655
ENT*2
DTM*011*20000405
REF*FZ*DCC0423705897-0
REF*VV*0001D
RMR*PO*422115488**125*125*0
RMR*IV*114114
IT1*****IT*00759356
ENT*3
DTM*011*20000405
REF*FZ*DCC0423571885-0
REF*VV*0001D
REF*PD*0000000252
RMR*PO*422115489**125*125*0
RMR*IV*114114
IT1*****IT*00759351
ENT*4
DTM*011*20000405
REF*FZ*DCC0423531871-0
REF*VV*0001D
REF*PD*0000000819
RMR*PO*422115490**125*125*0
RMR*IV*114114
ENT*5
ADX*125*CM
NTE*ORI*COLOR NOT AS SHOWN
DTM*011*20000405
REF*FZ*DCC0421127563-0
REF*VV*0001D
REF*PD*0000000296
RMR*PO*422115491****0
RMR*IV*114114
IT1*****IT*00759399
ENT*6
DTM*011*20060603
REF*FZ*DSRES060306REV
REF*VV*0001P
RMR****21795.59*21795.59*0
REF*ZZ**MANUAL-REVERSE DROP SHIP RESERVE WEEK OF 6/3
SE*39*0001

Home Shopping Network

01/17/10

GE*1*6

IEA*1*000000005

DROP SHIP

Transaction Set 820

Page 31