



EDI 860  
Purchase Order Change  
and Cancellation

ANSI Standard Version 4010

Revision: June 19,2000

For Warehouse Fulfillment Only

## **Overview**

### **Header**

All information contained in the BCH segment N1 segment that contains vendor name and number and will be present on all 860's.

The N1 segment that contains vendor name and number will also be

All other segments will only be present if there is a change to that information.

### **Detail**

In the detail loops the HSN item number and HSN item description will always be present.

Depending on what is provided by the vendor, the vendor item number and/or UPC will always be present.

The POC 02 will prompt the change being made to the individual line item.

If there is more than one change per line item, additional detail loops will be provided detailing each change.

Quantities, unit cost, category and warehouse allocation will only be present if there is a change from the original Purchase Order.

**SEGMENT ISA - INTERCHANGE CONTROL HEADER**

**PURPOSE**

To start and identify an interchange of one or more functional groups and interchange-related control segments.

**EDI STANDARD SEGMENT**

ISA	*	I01	*	I02	*	I03	*	I04	*	I05	*
		I06	*	I07	*	I08	*	I09	*	I10	*
		I11	*	I12	*	I13	*	I14	*	I15	~

**HSN SUBSET OF EDI STANDARD SEGMENT**

Same as the EDI Standard Segment

ELEMENT NUMBER	ELEMENT NAME/DESCRIPTION	ELEMENT ATTRIBUTES	COMMENTS
ISA	<b>SEGMENT IDENTIFIER</b>		"ISA"
<b>I01 001</b>	<b>AUTHORIZATION INFORMATION QUALIFIER</b> Code to identify the type of information in the Authorization Information.	(M IS 2/2)	" 00 "
<b>I02 002</b>	<b>AUTHORIZATION INFORMATION</b> Information used for additional identification or authorization of the sender or the data in the interchange.	(M AN 10/10)	blank
<b>I03 003</b>	<b>SECURITY COMMUNICATION QUALIFIER</b> Code to identify the type of information in the Security Information.	(M ID 2/2)	" 00 "
<b>I04 004</b>	<b>SECURITY INFORMATION</b> This is used for identifying the security information about the sender of the data in the interchange.	(M AN 10/10)	blank

**Warehouse Fulfillment**

---

<b>I05 005</b>	<b>INTERCHANGE ID QUALIFIER</b> Qualifier to designate the system/method of code structure used to designate the sender or receiver ID element being qualified.	(M ID 2/2)	HSN interchange qualifier. " 12 "
<b>I06 006</b>	<b>INTERCHANGE SENDER ID</b> Identification code published by the sender for other parties to use as the receiver ID to route data to them. The sender always codes this number in the sender ID element.	(M ID 15/15)	HSN interchange ID. " 8135728585 "  "8135728585T" (for testing)
<b>I05 007</b>	<b>INTERCHANGE ID QUALIFIER</b> Qualifier to designate the system/method of code structure used to designate the sender or receiver ID element being qualified.	(M ID 2/2)	Your interchange qualifier.
<b>I07 008</b>	<b>INTERCHANGE RECEIVER ID</b> Identification code published by the sender for other parties to use as the receiver ID to route data to them.	(M ID 15/15)	Your interchange ID.
<b>I08 009</b>	<b>INTERCHANGE DATE</b> Date of the interchange.	(M DT 6/6)	Interchange creation date (YYMMDD)
<b>I09 010</b>	<b>INTERCHANGE TIME</b> Time of the interchange	(M TM 4/4)	Interchange creation time. HHMM
<b>I10 011</b>	<b>INTERCHANGE CONTROL STANDARDS IDENTIFIER</b> Code to identify the agency responsible for the control standard used..	(M ID 1/1)	" U "
<b>I11 012</b>	<b>INTERCHANGE CONTROL VERSION NUMBER</b> Version number covers the interchange control segments and functional group control segments.	((M ID 5/5)	" 00401"
<b>I12 013</b>	<b>INTERCHANGE CONTROL NUMBER</b> The number uniquely identifies the interchange data to the sender.	(M NO 9/9)	HSN sequential number

**Warehouse Fulfillment**

---

<b>I13 014</b>	<b>ACKNOWLEDGMENT REQUESTED</b> Code sent to request an interchange acknowledgment.	(M ID 1/1)	" 0 "
<b>I14 015</b>	<b>TEST INDICATOR</b> Code to indicate whether data enclosed by this interchange envelope is test or production.	(M ID 1/1)	" P " = production " T " = test
<b>I15 016</b>	<b>SUBELEMENT SEPARATOR</b>	(M AN 1/1)	" > "

---

**SEGMENT GS - FUNCTION GROUP HEADING**

**PURPOSE**

To indicate the beginning of a functional group and to provide control information.

**EDI STANDARD SEGMENT**

GS	*	479	*	142	*	124	*	29	*	30	*	28	*
		455	*	480		~							

**HSN SUBSET OF EDI STANDARD SEGMENT**

Same as the EDI Standard Segment.

ELEMENT NUMBER	ELEMENT NAME/DESCRIPTION	ELEMENT ATTRIBUTES	COMMENTS
GS	<b>SEGMENT IDENTIFIER</b>		"GS"
<b>479 001</b>	<b>FUNCTIONAL IDENTIFIER CODE</b> Code identifying a group of application related Transaction Sets.	(M ID 2/2)	"PC"
<b>142 002</b>	<b>APPLICATION SENDER'S CODE</b> Code identifying sending party.	(M AN 2/15)	HSN interchange ID "8135728585"  "8135728585T" (for testing) Your interchange ID.
<b>124 003</b>	<b>APPLICATION RECEIVER'S CODE</b> Code identifying receiving party.	(M AN 2/15)	
<b>29 004</b>	<b>GROUP DATE</b> Date sender generated a group of transaction sets.	(M DT 6/6)	System date when group was created (CCYYMMDD).
<b>30 005</b>	<b>GROUP TIME</b> Time when the sender generated a functional group of transaction sets	(M TM 4/4)	Local time when group was generated (HHMM).
<b>28 006</b>	<b>GROUP CONTROL NUMBER</b> Assigned number originated and maintained by the sender.	(M ID 1/9)	HSN sequential number
<b>455 007</b>	<b>RESPONSIBLE AGENCY CODE.</b> Code used in conjunction with Data Element 480 to identify the issuer of the standard.	(M ID 1/2)	"X" for ASC X12.

***Warehouse Fulfillment***

---

<b>480</b>	<b>VERSION/RELEASE/INDUSTRY</b>	(M ID 1/12)	" 004010 "
<b>008</b>	<b>ID CODE</b>		version number

Version and release information of the EDI standard being used.

---

**SEGMENT ST - TRANSACTION SET HEADER**

**PURPOSE**

To indicate the start of a transaction set and to assign a control number.

**EDI STANDARD SEGMENT**

ST \* 143 \* 329 ~

**HSN SUBSET OF EDI STANDARD SEGMENT**

Same as EDI Standard Segment above.

<b>ELEMENT NUMBER</b>	<b>ELEMENT NAME/DESCRIPTION</b>	<b>ELEMENT ATTRIBUTES</b>	<b>COMMENTS</b>
ST	SEGMENT IDENTIFIER		"ST"
143 001	TRANSACTION SET IDENTIFIER CODE Code uniquely identifying a transaction set.	(M ID 3/3)	"860"
329 002	TRANSACTION SET CONTROL NUMBER Identifying control number assigned by the originator for a transaction set.	(M AN 4/9)	Unique control number identifying a transaction set.



**Warehouse Fulfillment**

**SEGMENT BCH - BEGINNING SEGMENT FOR PURCHASE ORDER**

**PURPOSE**

To indicate purpose of 860, whether cancellation or change. BCH will be present for all 860s.

**EDI STANDARD SEGMENT**

BCH \* 353 \* 92 \* 324 \* 328 \*  
323 \* 367 \* 587 \* 1019 ~

**HSN SUBSET OF EDI STANDARD SEGMENT**

BCH \* 353 \* 92 \* 324 \* 328 \* 373 ~

ELEMENT NUMBER	ELEMENT NAME/DESCRIPTION	ELEMENT ATTRIBUTES	COMMENTS
BCH	SEGMENT IDENTIFIER		"BCH"
353 001	TRANSACTION SET PURPOSE CODE Code identifying purpose of transaction set.	(M ID 2/2)	" 01 " = Cancellation " 04 " = Change
92 002	PURCHASE ORDER TYPE CODE Code specifying the type of P O	(M ID 2/2)	" SA "
324 003	PURCHASE ORDER NUMBER Identifying number assigned by the orderer/purchaser.	(M AN 1/22)	<b>HSN</b> Purchase order number (Length ≤ 10)
328 004	RELEASE NUMBER Number identifying a release against a Purchase Order .	(O AN 1/30)	"NOT USED"
327 005	CHANGE ORDER SEQUENCE NUMBER	(O AN 1/8)	"NOT USED"
373 006	PURCHASE ORDER DATE Date assigned by the purchaser to Purchase Order	(M DT 8/8)	<b>HSN</b> Order Date (CCYYMMDD)

**SEGMENT FOB – FOB RELATED INSTRUCTIONS**

**PURPOSE**

To specify identifying numbers.

**EDI STANDARD SEGMENT**

FOB	*	146	*	309	*	352	*	334	*	335	*
		309	*	352	*	54	*	352	~		

**HSN SUBSET OF EDI STANDARD SEGMENT**

FOB	*	146	*	309	*	352	~
-----	---	-----	---	-----	---	-----	---

ELEMENT NUMBER	ELEMENT NAME/DESCRIPTION	ELEMENT ATTRIBUTES	COMMENTS
FOB	SEGMENT IDENTIFIER		"FOB"
146 001	SHIPMENT METHOD OF PAYMENT Code specifying payment method	(O ID 2/2)	" PP " = Pre-Paid by Buyer " CC " = Collect
309 002	LOCATION QUALIFIER Code identifying type of location referencing FOB03.	(C ID 1/2)	" NS " = City/State from Points
352 003	DESCRIPTION A free form description to clarify the related data elements and their content.	(O AN 1/80)	City and State of Point of Departure.

**SEGMENT ITD – TERMS OF SALE**

**PURPOSE**

Terms of Sale/Deferred Terms of Sale.

**EDI STANDARD SEGMENT**

ITD	*	336	*	333	*	338	*	370	*	351	*	446	*
		386	*	362	*	388	*	389	*	342	*	352	*
		765	*	107	*	954	~						

**HSN SUBSET OF EDI STANDARD SEGMENT**

ITD	*	336	*	333	*	338	*	370	*	446	*	386	*
		362	~										

ELEMENT NUMBER	ELEMENT NAME/DESCRIPTION	ELEMENT ATTRIBUTES	COMMENTS
ITD	SEGMENT IDENTIFIER		" ITD "
336 001	TERMS TYPE CODE Code identifying type of payment terms.	(C ID 2/2)	" 14 "
333 002	TERMS BASIS DATE CODE Code identifying the beginning of the terms period (1=shipdate, 2=delivery date, 3=invoice date)	(C ID 1 /2)	" 2 "
338 003	TERMS DISCOUNT PERCENT	(O R 1/6)	"NOT USED"
370 004	TERMS DISCOUNT DUE DATE	(C DT 8/8)	"NOT USED"
351 005	TERMS DISCOUNT DAYS DUE	(C N0 1/3)	"NOT USED"
446 006	TERMS NET DUE DATE	(O DT 8/8)	"NOT USED"
386 007	TERMS NET DAYS	(O N0 1/3)	"NOT USED"
362 008	TERMS DISCOUNT AMOUNT	(O N2 1/10)	"NOT USED"
388 009	TERMS DEFERRED DUE DATE	(O DT 6/6)	"NOT USED"
389 010	DEFERRED AMOUNT DUE	(C N2 1/10)	"NOT USED"
342 011	PERCENT OF INVOICE PAYABLE	(C R 1/5)	"NOT USED"

***Warehouse Fulfillment***

---

<b>352</b>	<b>DESCRIPTION</b>	(O AN 1/80)	Terms of Sale
<b>012</b>	Free form description of terms		
<b>765</b>	<b>DAY OF MONTH</b>	(C NO 1/2)	"NOT USED"
<b>013</b>			
<b>107</b>	<b>PAYMENT METHOD CODE</b>	(O ID 1/2)	"NOT USED"
<b>014</b>			
<b>954</b>	<b>PERCENT</b>	(O R 1/10)	"NOT USED"
<b>015</b>			

**Warehouse Fulfillment**

---

**SEGMENT DTM – DATE/TIME REFERENCE**

**PURPOSE**

To specify identifying numbers.

**EDI STANDARD SEGMENT**

DTM \* 374 \* 373 \* 337 \* 623 \* 624 ~

**HSN SUBSET OF EDI STANDARD SEGMENT**

DTM \* 374 \* 373 ~

<b>ELEMENT NUMBER</b>	<b>ELEMENT NAME/DESCRIPTION</b>	<b>ELEMENT ATTRIBUTES</b>	<b>COMMENTS</b>
<b>DTM</b>	<b>SEGMENT IDENTIFIER</b>		“DTM”
<b>374 001</b>	<b>DATE/TIME QUALIFIER</b> Code specifying date and/or time.	(C ID 3/3)	“ 010 “ = Requested Ship Date
<b>373 002</b>	<b>REFERENCE NUMBER</b> Reference number or identification number as defined for a particular Transaction Set. or as specified by the Reference Number Qualifier.	(O DT 8/8)	<b>Date</b> CCYYMMDD

**Warehouse Fulfillment**

**SEGMENT N1 - NAME**

**PURPOSE**

To specify identifying numbers.

**EDI STANDARD SEGMENT**

N1	*	98	*	93	*	66	*	67	~
----	---	----	---	----	---	----	---	----	---

**HSN SUBSET OF EDI STANDARD SEGMENT**

N1	*	128	*	127	*	66	*	67	~
----	---	-----	---	-----	---	----	---	----	---

ELEMENT NUMBER	ELEMENT NAME/DESCRIPTION	ELEMENT ATTRIBUTES	COMMENTS
N1	SEGMENT IDENTIFIER		"N1"
98 001	ENTITY IDENTIFIER CODE	(M ID 2/3)	"VN" = Vendor
93 002	NAME Free form name.	(M AN 1/60)	Name of Vendor
66 003	IDENTIFICATION CODE QUALIFIER Reference number or identification number as defined for a particular Transaction Set. or as specified by the Reference Number Qualifier.	(M ID 1/2)	"92" = Assigned by Buyer
67 004	IDENTIFICATION CODE A free form description to clarify the related data elements and their content.	(M AN 2/80)	HSN Internal Vendor Number

**SEGMENT POC - PO BASELINE ITEM DETAIL**

**PURPOSE**

To specify basic and most frequently used line item data.

**EDI STANDARD SEGMENT**

POC	*	350	*	670	*	330	*	671	*	355	*
		212	*	639	*	235	*	234	*	235	*
		234	*	235	*	234	*	235	*	234	*
		235	*	234	*	235	*	234	*	235	*
		234	*	235	*	234	*	235	*	234	~

**HSN SUBSET OF EDI STANDARD SEGMENT**

POC	*	350	*	670	*	330	*	671	*
		212	*	639	*	235	*	234	*
		235	*	234	*	235	*	~	*

ELEMENT NUMBER	ELEMENT NAME/DESCRIPTION	ELEMENT ATTRIBUTES	COMMENTS
POC	SEGMENT IDENTIFIER		"POC"
350 001	ASSIGNED IDENTIFICATION Alphanumeric characters assigned for differentiation within a transaction set.	(M AN 1/11)	HSN PO Line number (Length ≤ 2)
670 002	CHANGE OR RESPONSE TYPE CODE	(M ID 2/2)	AI Add Item DI Delete Item PC Price Change QD Quantity Decrease QI Quantity Increase RQ Change Warehouse Allocation CE Change Unit of Measure CA Change Vendor SKU CA Change UPC CE Change Category
330 003	QUANTITY ORDERED	(O R 1/9)	Original PO quantity
671 004	QUANTITY LEFT TO RECEIVE	(C R 1/9)	Incremental change if code is QD or QI

**Warehouse Fulfillment**

---

<b>355 005</b>	<b>UNIT OR BASIS FOR MEASUREMENT CODE</b> Code identifying the type of unit price for an item.	(C ID 2/2)	Unit of Measure
<b>212 006</b>	<b>UNIT PRICE</b> Code identifying the type of unit price for an item.	(C R 1/17)	Unit Cost
<b>639 007</b>	<b>BASIS OF UNIT PRICE CODE</b> Code identifying the type of unit price for an item	(O ID 2/2)	"LE"
<b>235 008</b>	<b>PRODUCT/SERVICE ID QUALIFIER</b> Code identifying type of descriptive number in Product ID.	(C ID 2/2)	<b>HSN</b> "VN " (Vendor's style number qualifier)
<b>234 009</b>	<b>PRODUCT/SERVICE ID</b> Identifying number for a product..	(O AN 1/48)	<b>HSN</b> Vendors Item number
<b>235 010</b>	<b>PRODUCT/SERVICE ID QUALIFIER</b> Code identifying type of descriptive number in Product ID.	(M ID 2/2)	<b>HSN</b> "IT " (Buyer's style number qualifier)
<b>234 011</b>	<b>PRODUCT/SERVICE ID</b> Identifying number for a product..	(M AN 1/48)	<b>HSN</b> HSN's Item number (Length = 15 maximum )
<b>235 012</b>	<b>PRODUCT/SERVICE ID QUALIFIER</b> Code identifying type of descriptive number in Product ID.	(C ID 2/2)	<b>HSN</b> "UP " Universal Product Code UPC
<b>234 013</b>	<b>PRODUCT/SERVICE ID</b> Identifying number for a product..	(O AN 1/48)	<b>HSN</b> UPC if available



**SEGMENT PID - PRODUCT/ITEM DESCRIPTION**

**PURPOSE**

To describe a product or process in coded or free form format.

**EDI STANDARD SEGMENT**

PID	*	349	*	750	*	559	*
		751	*	352	*	752	~

**HSN SUBSET OF EDI STANDARD SEGMENT**

PID	*	349	*	*	*	*	352	~
-----	---	-----	---	---	---	---	-----	---

ELEMENT NUMBER	ELEMENT NAME/DESCRIPTION	ELEMENT ATTRIBUTES	COMMENTS
PID	SEGMENT IDENTIFIER		"PID"
349 001	ITEM DESCRIPTION TYPE Code indicating the format of a description.	(C ID 1/1)	HSN " F "
352 005	DESCRIPTION A free form description to clarify the related data elements and their content.	(O AN 1/80)	HSN Item description (Max length = 40)

**Warehouse Fulfillment**

**SEGMENT SDQ - SPECIAL SERVICES**

**PURPOSE**

To specify special conditions or services associated with the purchased product.

**EDI STANDARD SEGMENT**

SDQ	*	355	*	66	*	67	*	380	*
		67	*	380	~				

**HSN SUBSET OF EDI STANDARD SEGMENT**

SDQ	*	355	*	66	*	67	*	380	*
		67	*	380	~				

ELEMENT NUMBER	ELEMENT NAME/DESCRIPTION	ELEMENT ATTRIBUTES	COMMENTS
<b>SDQ</b>	<b>SEGMENT IDENTIFIER</b>		"SDQ"
<b>355 001</b>	<b>UNIT OF MEASUREMENT CODE</b> Code specifying the units in which a value is being expressed	(O ID 2/2)	"EA"
<b>66 002</b>	<b>IDENTIFICATION CODE QUALIFIER</b> Code identifying the warehouse receiving the goods.	(C ID 1/2)	"92" = Assigned by buyer
<b>67 003</b>	<b>IDENTIFICATION CODE</b> Code identifying the warehouse receiving the goods	(O AN 2/80)	Salem = "97" Waterloo = "98" Showroom = "01" Jewelry = "99"
<b>380 004</b>	<b>QUANTITY</b> Quantity	(O R 1/15)	Quantity
<b>67 005</b>	<b>IDENTIFICATION CODE</b> Code identifying the warehouse receiving the goods.	(O AN 2/80)	Salem = "97" Waterloo = "98" If being shipped to more than one warehouse
<b>380 006</b>	<b>QUANTITY</b> Quantity	(O R 1/15)	Quantity If being shipped to more than one warehouse

**Warehouse Fulfillment**

---

**SEGMENT TC2 – COMMODITY**

**PURPOSE**

To identify commodity or group of commodities.

**EDI STANDARD SEGMENT**

TC2 \* 23 \* 22 ~

**HSN SUBSET OF EDI STANDARD SEGMENT**

TC2 \* 23 \* 22 ~

<b>ELEMENT NUMBER</b>	<b>ELEMENT NAME/DESCRIPTION</b>	<b>ELEMENT ATTRIBUTES</b>	<b>COMMENTS</b>
TC2	<b>SEGMENT IDENTIFIER</b>		"TC2"
23 001	<b>COMMODITY CODE QUALIFIER</b> Code specifying commodity.	(C ID 1/1)	" Q " = Category
22 002	<b>REFERENCE NUMBER</b> Reference number or identification number as defined for a particular Transaction Set. or as specified by the Reference Number Qualifier.	(O AN 1/30)	HSN Product Category Code

**Warehouse Fulfillment**

---

**SEGMENT AMT – MONETARY AMOUNT**

**PURPOSE**

To specify identifying numbers.

**EDI STANDARD SEGMENT**

\*  \*   ~

**HSN SUBSET OF EDI STANDARD SEGMENT**

\*  \*  ~

<b>ELEMENT NUMBER</b>	<b>ELEMENT NAME/DESCRIPTION</b>	<b>ELEMENT ATTRIBUTES</b>	<b>COMMENTS</b>
AMT	SEGMENT IDENTIFIER		"AMT"
522 001	AMOUNT CODE QUALIFIER	(C ID ½)	" 1 " = Line item Total
782 002	MONETARY AMOUNT	(O N2 1/15)	Line Item Total

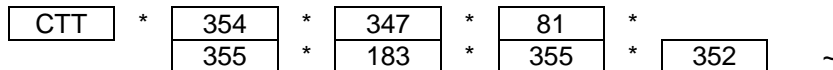
—

**SEGMENT CTT - TRANSACTION TOTALS**

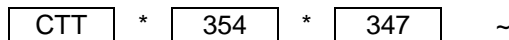
**PURPOSE**

To transmit a hash total for a specific element in the transaction set.

**EDI STANDARD SEGMENT**



**HSN SUBSET OF EDI STANDARD SEGMENT**



ELEMENT NUMBER	ELEMENT NAME/DESCRIPTION	ELEMENT ATTRIBUTES	COMMENTS
CTT	SEGMENT IDENTIFIER		"CTT"
354 001	<b>NUMBER OF LINE ITEMS</b> Total number of line items in the transaction set.	(M N0 1/6)	Total number of line items in the transaction.
347 002	<b>HASH TOTAL</b> Sum of totals of the specified data element.	(O R 1/10)	Total number of line items in the transaction.
81 003	<b>WEIGHT</b> Numeric value of weight.	(C R 1/10)	**NOT USED**
355 004	<b>UNIT OF MEASUREMENT CODE</b> Code specifying the units in which a value is being expressed.	(C ID 2/2)	**NOT USED**
183 005	<b>VOLUME</b> Value of volumetric measure.	(C R 1/8)	**NOT USED**
355 006	<b>UNIT OF MEASUREMENT CODE</b> Code specifying the units in which a value is being expressed.	(C ID 2/2)	**NOT USED**
352 007	<b>DESCRIPTION</b> Free form description to clarify the related data elements and their content.	(O AN 1/80)	**NOT USED**

---

**SEGMENT SE - TRANSACTION SET TRAILER**

**PURPOSE**

To indicate the end of the transaction set and provide the count of the transmitted segments (including the beginning (ST) and the ending (SE) segments).

**EDI STANDARD SEGMENT**

SE \* 96 \* 329 ~

**HSN SUBSET OF EDI STANDARD SEGMENT**

Same as the EDI Standard Segment.

	<b>ELEMENT NAME/DESCRIPTION</b>	<b>ELEMENT ATTRIBUTES</b>	<b>COMMENTS</b>
<b>SE</b>	<b>SEGMENT IDENTIFIER</b>		"SE"
<b>96 001</b>	<b>NUMBER OF INCLUDED SEGMENTS</b> Total number of segments included in a transaction set including ST and SE segments.	(M NO 1/10)	
<b>329 002</b>	<b>TRANSACTION SET CONTROL NUMBER</b> Identifying control number that must be unique within the transaction set functional group assigned by the originator for a transaction set.	(M AN 4/9)	<b>HSN</b> Our sequential number

---

**SEGMENT GE - FUNCTIONAL GROUP TRAILER**

**PURPOSE**

To indicate the end of a functional group and to provide control.

**EDI STANDARD SEGMENT**

GE	*	97	*	28	~
----	---	----	---	----	---

**HSN SUBSET OF EDI STANDARD SEGMENT**

Same as EDI Standard Segment

	<b>ELEMENT NAME/DESCRIPTION</b>	<b>ELEMENT ATTRIBUTES</b>	<b>COMMENTS</b>
<b>GE</b>	<b>SEGMENT IDENTIFIER</b>		" GE "
<b>97 001</b>	<b>NUMBER OF TRANSACTION SETS INCLUDED.</b> Count of ST segments within the Group.	(M NO 1/6)	Total number of transaction sets included in the GS – GE group.
<b>28 002</b>	<b>GROUP CONTROL NUMBER</b> Assigned number originated and maintained by the sender.	(M NO 1/9)	Same number as in GS segment (data element 06)

---

**SEGMENT IEA - INTERCHANGE CONTROL TRAILER**

**PURPOSE**

To define the end of an interchange of one or more functional groups and interchange-related control segments.

**EDI STANDARD SEGMENT**

IEA \* I16 \* I12 ~

**HSN SUBSET OF EDI STANDARD SEGMENT**

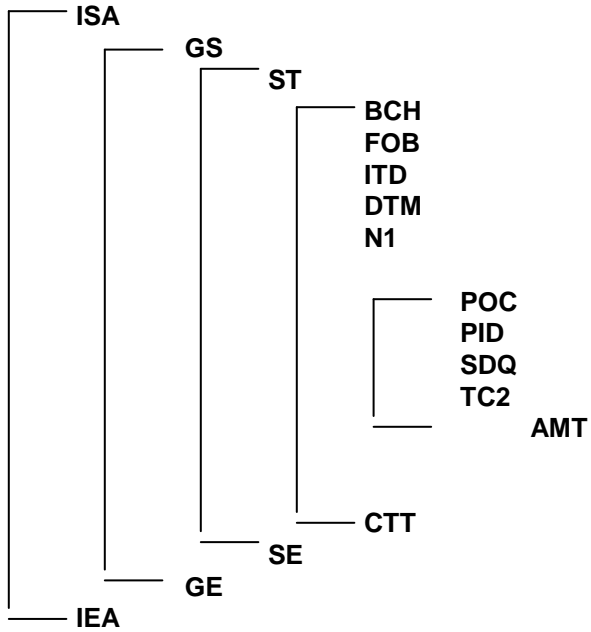
Same as EDI Standard Segment.

	<b>ELEMENT NAME/DESCRIPTION</b>	<b>ELEMENT ATTRIBUTES</b>	<b>COMMENTS</b>
<b>IEA</b>	<b>SEGMENT IDENTIFIER</b>		“ IEA “
<b>I16 001</b>	<b>NUMBER OF INCLUDED FUNCTIONAL GROUPS</b> A count of the number of included groups included in a transmission.	(M N0 1/5)	Count of the GS segments in the Transmission.
<b>I12 002</b>	<b>INTERCHANGE CONTROL NUMBER</b> Number that uniquely identifies the interchange data. It is assigned by the sender.	(M N0 9/9)	Same number as in the ISA segment (data element 13)



---

**TRANSACTION LAYOUT**



---

**SAMPLE TRANSACTION**

ISA\*00\*                   \*00\*                   \*12\*8135728585           \*01\*999920703  
\*000509\*1912\*U\*00401\*000000394\*0\*P\*>  
GS\*PC\*8135728585\*999920703\*20000509\*1912\*000000394\*X\*004010  
ST\*860\*0001  
BCH\*04\*SA\*301108\*\*\*20000508  
DTM\*010\*20000523  
N1\*VN\*CLEAN CORPORATION\*92\*091774  
POC\*1\*QD\*15\*2\*\*\*LE\*VN\*GEG391800\*IT\*963822  
PID\*F\*\*\*\*PLAT DOORNOCKER EARRINGS  
SDQ\*EA\*92\*87\*13  
AMT\*1\*185575  
POC\*2\*QI\*15\*5\*\*\*LE\*VN\*GEG392000\*IT\*963824  
PID\*F\*\*\*\*PLAT CIRCLE DANGLE EARRINGS  
SDQ\*EA\*92\*87\*20  
AMT\*1\*325700  
POC\*3\*PC\*\*\*65\*LE\*VN\*GCH315700\*IT\*963826  
PID\*F\*\*\*\*PLAT STAR OF DAVID PDT  
AMT\*1\*97500  
POC\*4\*DI\*\*\*\*\*LE\*VN\*GEG391900\*IT\*963828  
PID\*F\*\*\*\*PLAT COLUMN DANGLE EARRINGS  
POC\*5\*UM\*\*\*LB\*\*LE\*VN\*315600\*IT\*963831  
PID\*F\*\*\*\*PLANT FOOD  
POC\*6\*CC\*\*\*\*\*LE\*VN\*963835\*IT\*963833043542  
PID\*F\*\*\*\*PLAT HOOP LINK BRACELET:PLATIN:7"  
TC2\*Q\*544  
POC\*6\*QD\*8\*2\*\*288.95\*LE\*VN\*966407\*IT\*963836043544  
PID\*F\*\*\*\*PLAT CURB BRACELET:PLATIN:7 1/2"  
AMT\*1\*173370  
POC\*8\*VS\*\*\*\*\*LE\*VN\*966410\*IT\*963839043605  
PID\*F\*\*\*\*PLAT TRIPLE ROPE NECKLACE:PLATIN:13/14  
CTT\*8  
SE\*29\*0001  
GE\*1\*000000394  
IEA\*1\*000000394  
ISA\*00\*                   \*00\*                   \*12\*8135728585           \*01\*999920703  
\*000509\*1912\*U\*00401\*000000395\*0\*P\*>  
GS\*PC\*8135728585\*999920703\*20000509\*1912\*000000395\*X\*004010  
ST\*860\*0001  
BCH\*01\*SA\*301111\*\*\*20000509  
N1\*VN\*CLEAN CORPORATION\*92\*091774  
CTT\*1  
SE\*5\*0001  
GE\*1\*000000395  
IEA\*1\*000000395