

# **Menards Implementation Guidelines**



**VMI  
Program  
4/4/2005**



## Table of Contents

- q **Electronic Commerce Information – Menard, Inc.**  
General contact & setup information you need to properly set up Menards in your systems.
  
- q **VMI Business Rules**  
Outlines the general requirements and expectations of the program.
  
- q **VMI Flow Chart**  
Outlines the VMI lifecycle from sale of product to receipt of replenishment product.
  
- q **Mapping Specifications – Version 4010**  
These are EDI mapping specifications for the following documents.
  - 850 Purchase Order
  - 852 Product Activity (Outbound)
  - 855 Purchase Order Acknowledgment (Suggested Orders)
  - 852 Product Activity (Inbound)

Any questions concerning the definition and/or use of segments in these documents should be communicated immediately to avoid possible misunderstandings.
  
- q **VMI Examples**  
These are examples of what the data will look like for outbound documents and what the data should like for inbound documents.



## Menard, Inc. Electronic Commerce Information

### General Information:

---

Mailing Address: Menard, Inc.  
4777 Menard Drive  
Eau Claire, WI 54703

Fax Number: (715) 876-2868

Contacts: Jason Solberg                      Brian Fechter  
EDI Coordinator                      EDI Analyst  
715-876-2612                      715-876-2417  
[jsolberg@menard-inc.com](mailto:jsolberg@menard-inc.com)                      [bfechter@menard-inc.com](mailto:bfechter@menard-inc.com)

Shirley Mance                      Chris Taylor  
EDI Specialist                      EDI Analyst  
715-876-2575                      715-876-2685  
[smance@menard-inc.com](mailto:smance@menard-inc.com)                      [ctaylor@menard-inc.com](mailto:ctaylor@menard-inc.com)

### Documents Supported:

---

Standard: ASC X.12                      Version / Release: 004010

<u>Document Type</u>	<u>Current</u>	<u>Future</u>
810 Invoice		X
850 Purchase Order	X	
852 Product Activity	X	
855 PO Acknowledgment	X	
856 Advance Ship Notice	X	
860 PO Change Request		X
870 Order Status Report	X	
997 Functional Acknowledgment	X	

### Transmission Information:

---

Primary Value Added Network: Sterling Commerce  
EDI/INT Software: IPNet/Inovis - BizManager

AS1 E-mail Address: Production: [ediprod@menard-inc.com](mailto:ediprod@menard-inc.com)  
Testing: [editest@menard-inc.com](mailto:editest@menard-inc.com)

*[Production / Test]*

Authorization Information Qualifier (ISA 01): 03  
Authorization Information (ISA 02): Internal Menards Vendor#  
Security Information Qualifier (ISA 03): 01  
Security Information: (ISA 04): Internal Menards Vendor#

Interchange ID Qualifier (ISA 05): 01  
Interchange Sender ID (ISA 06): 006203210P  
Functional Group Sender ID (GS 02): 006203210

Segment Delimiter: ~ (7E)  
Element Delimiter: \* (2A)  
Sub Element Delimiter: > (3E)



## **BUSINESS RULES – VMI**

### **GENERAL:**

- Point of sale data is transmitted via an EDI 852 document.
- EDI 852 documents are transmitted on a daily basis between 7-8am CT
- There are four types of data provided in an 852 document from Menards
  - QA – Quantity on Hand by store
  - QP – Quantity on Order by store
  - QS – Quantity Sold by store
  - QR – Quantity Received by store
- The 852 data should be used to generate suggested orders to Menards. Suggested orders should come in the form of an EDI 855 document.
- EDI 855 documents can technically be transmitted any day of the week but should follow any rules provided by our Buying Staff.
- EDI 855 documents should be transmitted between 6:00am and 10:00pm of any given day. They will then be processed the following morning.
- EDI 855 documents should reference an internal purchase order number or some other meaningful internal reference number assigned by the vendor
- Menards will process the 855s received and turn them into 850 purchase orders by store and reference the internal number (BAK03) supplied by the vendor. The preparation of resulting purchase orders will happen each morning (weekends may be excluded) and will be transmitted upon acceptance by the analyst responsible for your account.
- Vendor will provide approximate order points on a weekly basis through an EDI 852 document. This helps give our store team members an idea of when an order will generate.

### **NOTES:**

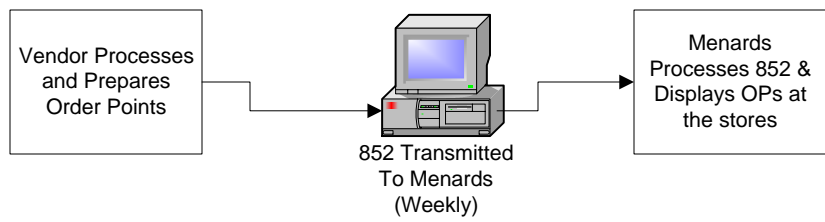
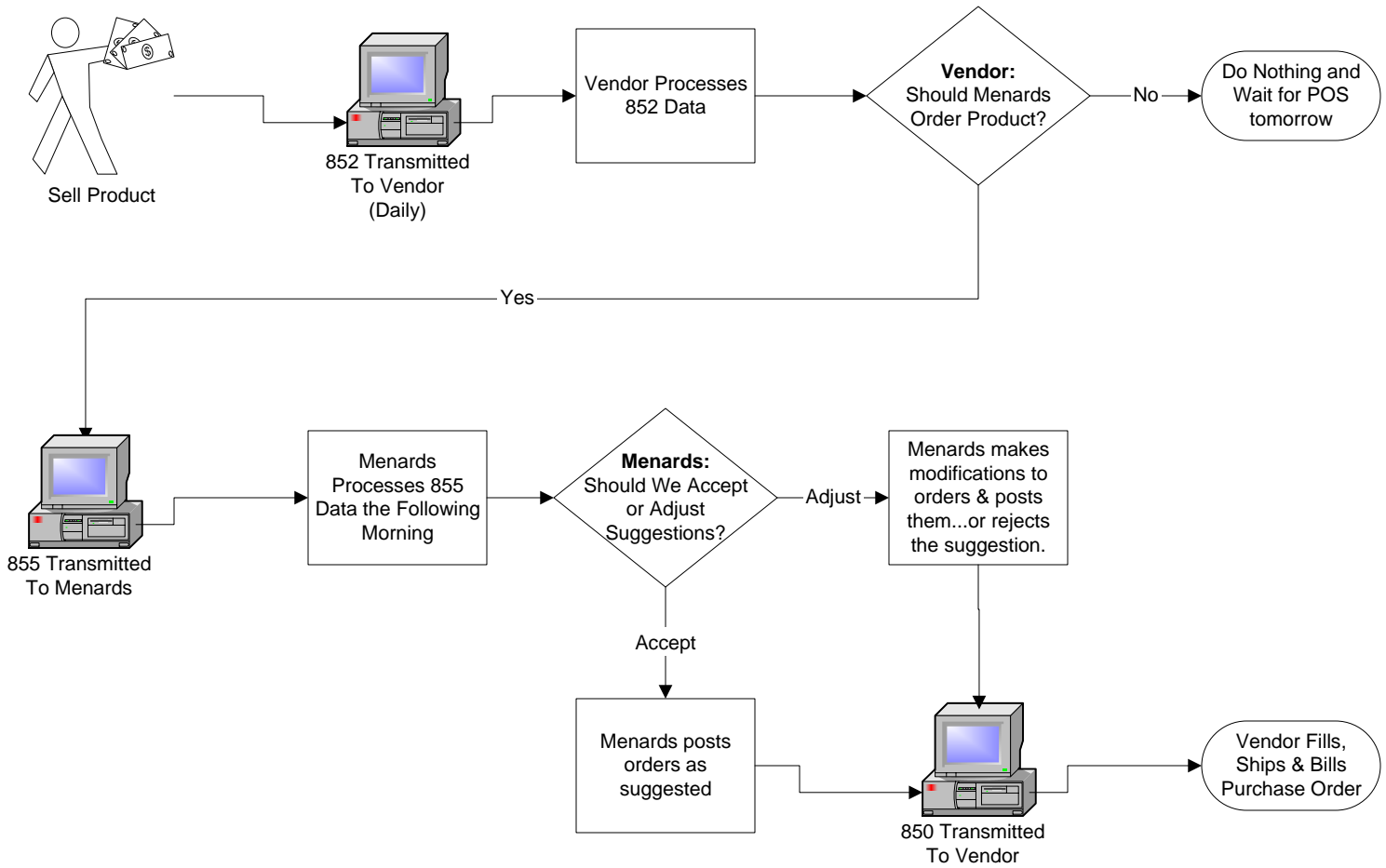
Our vendors are expected to use the Menard purchase order number we assign on all shipping and billing documents. We do not block off a group of PO's for open use.

Special orders will remain unaffected by this program. Stores will continue to write special orders where needed to fill a guest request and will be sent via EDI to the vendor as they become available. Should the need arise to special order a large volume of stock product, the vendor is expected to take this 'abnormal' sale into consideration when generating needs for that store.

Regarding product promotions, we expect our vendors to be aware of when promotions take place and we expect them to account for these 'abnormal' sales when generating needs for our stores during non-promotional periods. We also reserve the right to generate our own purchase orders, separate from purchase orders generated as a result of an EDI 855, both for promotional reasons or any other reasons deemed fit by our Buying Staff.

Please be aware that EDI 855 documents are 'suggested' orders. If the analyst reviewing those suggested orders does not agree with them, the analyst may alter the suggested order to fit the needs of Menards. Our vendors are expected to accommodate these adjustments and pick product according to the quantities represented on the purchase order.

# VMI Life Cycle



**Menard, Inc.**  
**ASC X12 (V4010) Mapping Specifications**  
**852 Product Activity Data (05/08/2002)**

Segment Data ID	Elem	Description	Type	Min/Max Length	Notes
<b>ISA - Interchange Control Header</b>					<b>Mandatory</b>
ISA01	101	Authorization Information Qualifier	ID	2/2	03 = Additional Data Information
ISA02	102	Authorization Information	AN	10/10	Assigned Menard Authorization ID
ISA03	103	Security Information Qualifier	ID	2/2	01 = Password
ISA04	104	Security Information	AN	10/10	Assigned Menard Security Password
ISA05	105	Interchange ID Qualifier	ID	2/2	01 = Duns (Dun & Bradstreet)
ISA06	106	Interchange Sender ID	AN	15/15	Menard Duns Number + (T or P)
ISA07	105	Interchange ID Qualifier	ID	2/2	Trading Partner's ID Qualifier
ISA08	107	Interchange Receiver ID	AN	15/15	Trading Partner's ID
ISA09	108	Interchange Date	DT	6/6	YYMMDD
ISA10	109	Interchange Time	TM	4/4	HHMM
ISA11	110	Interchange Control Standards Identifier	ID	1/1	U = ASC X12
ISA12	111	Interchange Control Version Number	ID	5/5	00401
ISA13	112	Interchange Control Number	NO	9/9	Menard Interchange Control Number
ISA14	113	Acknowledgment Requested	ID	1/1	0 = No Ack (TA1) Requested
ISA15	114	Test Indicator	ID	1/1	P = Production Data T = Test Data
ISA16	115	Component Element Separator	AN	1/1	>
<b>GS - Functional Group Header</b>					<b>Mandatory</b>
GS01	479	Functional Identifier Code	ID	2/2	PD = Product Activity Data
GS02	142	Application Sender's Code	AN	2/15	Menard Duns Number + (Q)
GS03	124	Application Receiver's Code	AN	2/15	Trading Partner's Identifier
GS04	373	Date	DT	8/8	YYYYMMDD
GS05	337	Time	TM	4/8	HHMM
GS06	28	Group Control Number	NO	1/9	Menard Group Control Number
GS07	455	Responsible Agency Code	ID	1/2	X = ASC X12
GS08	480	Version/ Release/Industry Identifier Code	AN	1/12	004010
<b>ST - Transaction Set Header</b>					<b>Mandatory</b>
ST01	143	Transaction Set Identifier Code	ID	3/3	852 = X12.1 Product Activity Data
ST02	329	Transaction Set Control Number	NO	4/9	Menard Transaction Set Control Number
<b>XQ - Reporting Date/Action</b>					<b>Mandatory</b>
XQ01	305	Transaction Handling Code	ID	1/2	F = Plan and Submit Suggested Purchase Orders
XQ02	373	Date	DT	8/8	Document Date (sent daily)
<b>LIN Loop (Item Identification)</b>					<b>Mandatory</b>
LIN01	350	Assigned Identification	AN	1/20	Sequence Number Starting at 1
LIN02	235	Product/Service ID Qualifier	ID	2/2	SK = Stock Keeping Unit (SKU)
LIN03	234	Product/Service ID	AN	1/48	SKU Assigned by Menard
<b>ZA Loop (Product Activity Reporting)</b>					<b>Conditional (1 to many)</b>
<b>ZA Loop (Product Activity Reporting)</b>					<b>Mandatory</b>
ZA 01	859	Activity Code	ID	2/2	QA = Current Inventory Quantity Available for Shipment or Sale (Quantity On Hands) QP = Quantity On Order, Not Yet Received QS = Quantity Sold QR = Quantity Received

<b>SDQ Loop (Destination Quantity) - QQ Quantity Allocation</b>					<b>Conditional (1 to many)</b>
					Quantity reflects On Hands When ZA01 = QA
					Quantity reflects On Order When ZA01 = QP
					Quantity reflects Quantity Sold When ZA01 = QS
					Quantity reflects Quantity Received When ZA01 = QR

<b>SDQ - Destination Quantity</b>					<b>Mandatory</b>
-----------------------------------	--	--	--	--	------------------

SDQ01	355	Unit or Basis for Measurement Code	ID	2/2	2 Character Unit Code
SDQ03	67	Identification Code	AN	2/80	4 Digit Store Number
SDQ04	380	Quantity	R	1/15	Quantity
SDQ05	67	Identification Code	AN	2/80	4 Digit Store Number
SDQ06	380	Quantity	R	1/15	Quantity
SDQ07	67	Identification Code	AN	2/80	4 Digit Store Number
SDQ08	380	Quantity	R	1/15	Quantity
SDQ09	67	Identification Code	AN	2/80	4 Digit Store Number
SDQ010	380	Quantity	R	1/15	Quantity
SDQ011	67	Identification Code	AN	2/80	4 Digit Store Number
SDQ012	380	Quantity	R	1/15	Quantity
SDQ013	67	Identification Code	AN	2/80	4 Digit Store Number
SDQ014	380	Quantity	R	1/15	Quantity
SDQ015	67	Identification Code	AN	2/80	4 Digit Store Number
SDQ016	380	Quantity	R	1/15	Quantity
SDQ017	67	Identification Code	AN	2/80	4 Digit Store Number
SDQ018	380	Quantity	R	1/15	Quantity
SDQ019	67	Identification Code	AN	2/80	4 Digit Store Number
SDQ020	380	Quantity	R	1/15	Quantity
SDQ021	67	Identification Code	AN	2/80	4 Digit Store Number
SDQ022	380	Quantity	R	1/15	Quantity

<b>CTT - Transaction Totals</b>					<b>Mandatory</b>
---------------------------------	--	--	--	--	------------------

CTT01	354	Number Of Line Items	NO	1/6	Total Number Of Line Items
-------	-----	----------------------	----	-----	----------------------------

<b>SE - Transaction Set Trailer</b>					<b>Mandatory</b>
-------------------------------------	--	--	--	--	------------------

SE01	96	Number Of Included Segments	NO	1/10	Total Number Of Segments
SE02	329	Transaction Set Control Number	NO	4/9	Assigned By Menard

<b>GE - Functional Group Trailer</b>					<b>Mandatory</b>
--------------------------------------	--	--	--	--	------------------

GE01	97	Number Of Transactions Sets Included	NO	1/6	Total Number Of Transaction Sets
GE02	28	Group Control Number	NO	1/9	Assigned By Menard

<b>IEA - Interchange Control Trailer</b>					<b>Mandatory</b>
--	--	--	--	--	------------------

IEA01	116	Number Of Included Functional Groups	NO	1/5	Total Number Of Functional Groups
IEA02	112	Interchange Control Number	NO	9/9	Assigned By Menard

**Menard, Inc.**  
**ASC X12 (V4010) Mapping Specifications**  
**855 Purchase Order Acknowledgment**

Segment ID	Data Element	Description	Type	Min/Max Length	Notes	
<b>ISA - Interchange Control Header</b>						<b>Mandatory</b>
ISA01	I01	Authorization Information Qualifier	ID	2/2	03 = Additional Data Information	
ISA02	I02	Authorization Information	AN	10/10	Assigned Menard Authorization ID	
ISA03	I03	Security Information Qualifier	ID	2/2	01 = Password	
ISA04	I04	Security Information	AN	10/10	Assigned Menard Security Password	
ISA05	I05	Interchange ID Qualifier	ID	2/2	Trading Partner's ID Qualifier	
ISA06	I06	Interchange Sender ID	AN	15/15	Trading Partner's ID	
ISA07	I05	Interchange ID Qualifier	ID	2/2	01 = Duns (Dun & Bradstreet)	
ISA08	I07	Interchange Receiver ID	AN	15/15	Menard Duns Number + (T or P)	
ISA09	I08	Interchange Date	DT	6/6	YYMMDD	
ISA10	I09	Interchange Time	TM	4/4	HHMM	
ISA11	I10	Interchange Control Standards Identifier	ID	1/1	U = ASC X12	
ISA12	I11	Interchange Control Version Number	ID	5/5	00401	
ISA13	I12	Interchange Control Number	NO	9/9	Trading Partner Interchange Control Num	
ISA14	I13	Acknowledgment Requested	ID	1/1	0 = No Ack ( <b>TA1</b> ) Requested	
ISA15	I14	Test Indicator	ID	1/1	P = Production Data T = Test Data	
ISA16	I15	Component Element Separator	AN	1/1	>	
<b>GS - Functional Group Header</b>						<b>Mandatory</b>
GS01	479	Functional Identifier Code	ID	2/2	PR = Purchase Order Acknowledgment	
GS02	142	Application Sender's Code	AN	2/15	Trading Partner's Identifier	
GS03	124	Application Receiver's Code	AN	2/15	Menard Duns Number + (Q)	
GS04	373	Date	DT	8/8	YYYYMMDD	
GS05	337	Time	TM	4/8	HHMM	
GS06	28	Group Control Number	NO	1/9	Trading Partner Group Control Number	
GS07	455	Responsible Agency Code	ID	1/2	X = ASC X12	
GS08	480	Version/ Release/Industry Identifier Code	AN	1/12	004010	
<b>ST - Transaction Set Header</b>						<b>Mandatory</b>
ST01	143	Transaction Set Identifier Code	ID	3/3	855 = X12.1 Purchase Order Acknowledgment	
ST02	329	Transaction Set Control Number	NO	4/9	Trading Partner Transaction Set Control Number	
<b>BAK - Beginning Segment for Purchase Order Acknowledgment</b>						<b>Mandatory</b>
BAK01	353	Transaction Set Purpose Code	ID	2/2	00 = Original	
BAK02	587	Acknowledgment Type	ID	2/2	AP = Acknowledge - Product Replenishment	
BAK03	324	Purchase Order Number	AN	1/22	Vendor Assigned Purchase Order Number (Used as a Reference Number by Menard)	
BAK04	373	Date	DT	8/8	Purchase Order Date	
<b>REF - Reference Identification</b>						<b>Optional</b>
REF01	128	Reference Identification Qualifier	ID	2/3	DP = Department Number	
REF02	127	Reference Identification	AN	1/30	Menard Department Number	
<b>DTM - Date/Time Reference</b>						<b>Mandatory</b>
DTM01	374	Date/Time Qualifier	ID	3/3	010 = Requested Ship	
DTM02	373	Date	DT	8/8	Scheduled Ship Date	



<b>N1 Loop (Name)</b>						<b>Conditional (1 to many)</b>
<b>N1 - Name</b>						<b>Mandatory</b>
N101	98	Entity Identifier Code	ID	2/3	ST = Ship To	
N102	93	Name	AN	1/60	Menard, Inc.	
N103	66	Identification Code Qualifier	ID	1/2	92 = Assigned by Buyer or Buyer's Agent	
N104	67	Identification Code	AN	2/80	Menard Store Number (ie. 3011)	

<b>PO1 Loop (Baseline Item Data)</b>						<b>Conditional (1 to many)</b>
<b>PO1 Baseline Item Data</b>						<b>Mandatory</b>
PO101	350	Assigned Identification	AN	120	Sequence Number (starting at 1)	
PO102	330	Quantity Ordered	R	1/15	Order Quantity	
PO103	355	Unit or Basis for Measurement Code	ID	2/2	2 Character Unit Code	
PO106	235	Product/Service ID Qualifier	ID	2/2	SK = Stock Keeping Unit (SKU)	
PO107	234	Product/Service ID	AN	1/48	SKU Assigned by Menard	

<b>CTT - Transaction Totals</b>						<b>Mandatory</b>
CTT01	354	Number Of Line Items	NO	1/6	Total number of PO1 segments	

<b>SE - Transaction Set Trailer</b>						<b>Mandatory</b>
SE01	96	Number Of Included Segments	NO	1/10	Total Number Of Segments	
SE02	329	Transaction Set Control Number	NO	4/9	Assigned By Menard	

<b>GE- Functional Group Trailer</b>						<b>Mandatory</b>
GE01	97	Number Of Transactions Sets Included	NO	1/6	Total Number Of Transaction Sets	
GE02	28	Group Control Number	NO	1/9	Assigned By Menard	

<b>IEA - Interchange Control Trailer</b>						<b>Mandatory</b>
IEA01	116	Number Of Included Functional Groups	NO	1/5	Total Number Of Functional Groups	
IEA02	112	Interchange Control Number	NO	9/9	Assigned By Menard	

**Menard, Inc**  
**ASC X12 (V4010) Mapping Specifications**  
**850 - Purchase Order (10/06/2003)**

Segment ID	Data Elem	Description	Min/Max Type	Length	Notes
<b>ISA - Interchange Control Header</b>					<b>Mandatory</b>
ISA01	101	Authorization Information Qualifier	ID	2/2	03 = Additional Data Information
ISA02	102	Authorization Information	AN	10/10	Assigned Menard Authorization ID
ISA03	103	Security Information Qualifier	ID	2/2	01 = Password
ISA04	104	Security Information	AN	10/10	Assigned Menard Security Password
ISA05	105	Interchange ID Qualifier	ID	2/2	01 = Duns (Dun & Bradstreet)
ISA06	106	Interchange Sender ID	AN	15/15	Menard Duns Number + T or P
ISA07	105	Interchange ID Qualifier	ID	2/2	Trading Partner's ID Qualifier
ISA08	107	Interchange Receiver ID	AN	15/15	Trading Partner's ID
ISA09	108	Interchange Date	DT	6/6	YYMMDD
ISA10	109	Interchange Time	TM	4/4	HHMM
ISA11	110	Interchange Control Standards Identifier	ID	1/1	U = ASC X12
ISA12	111	Interchange Control Version Number	ID	5/5	00401
ISA13	112	Interchange Control Number	NO	9/9	Menard Interchange Control Number
ISA14	113	Acknowledgment Requested	ID	1/1	0 = No Ack (TA1) Requested
ISA15	114	Test Indicator	ID	1/1	P = Production Data T = Test Data
ISA16	115	Component Element Separator	AN	1/1	>
<b>GS - Functional Group Header</b>					<b>Mandatory</b>
GS01	479	Functional Identifier Code	ID	2/2	PO = Purchase Order
GS02	142	Application Sender's Code	AN	2/15	Menard Duns Number
GS03	124	Application Receiver's Code	AN	2/15	Trading Partner's Identifier
GS04	373	Date	DT	8/8	YYYYMMDD
GS05	337	Time	TM	4/4	HHMM
GS06	28	Group Control Number	NO	1/9	Menard Group Control Number
GS07	455	Responsible Agency Code	ID	1/2	X = ASC X12
GS08	480	Version/ Release/Industry Identifier Code	AN	1/12	004010
<b>ST - Transaction Set Header</b>					<b>Mandatory</b>
ST01	143	Transaction Set Identifier Code	ID	3/3	850 = X12.1 Purchase Order
ST02	329	Transaction Set Control Number	NO	4/9	Menard Transaction Set Control Number
<b>BEG - Beginning Segment for Purchase Order</b>					<b>Mandatory</b>
BEG01	353	Transaction Set Purpose Code	ID	2/2	00 = Original
BEG02	92	Purchase Order Type Code	ID	2/2	<b>See Available Codes (Element 92)</b>
BEG03	324	Purchase Order Number	AN	12/12	Menard Purchase Order Number
BEG05	373	Date	DT	8/8	Menard Purchase Order Date (YYYYMMDD)
<b>REF - Reference Identification</b>					<b>Conditional</b>
<b>Required for Vendor Managed Programs</b>					
REF01	128	Reference Identification Qualifier	ID	2/3	VN = Vendor Order Number
REF02	127	Reference Identification	AN	1/30	Vendor Order Number
<b>PER - Admin Communications Contact (General Office)</b>					<b>Conditional</b>
<b>Standard/Required, QQ/Required, Special/Not Required</b>					
PER01	366	Contact Function Code	ID	2/2	OC = Order Contact
PER02	93	Name	AN	1/35	Menard Associate Name
PER03	365	Communication Number Qualifier	ID	2/2	TE = Telephone Number
PER04	364	Communication Number	AN	10/10	Menard Associate Phone Number 715876XXXX
<b>FOB - F.O.B. Related Instructions</b>					<b>Conditional</b>
<b>Standard/Required, QQ/Required, Special/Not Required</b>					
FOB01	146	Shipment Method Of Payment	ID	2/2	<b>See Available Codes (Element 146)</b>
FOB02	309	Location Qualifier	ID	1/2	<b>See Available Codes (Element 309)</b>
FOB03	352	Description	AN	1/80	Free Format FOB Description
<b>CSH - Header Sale Condition</b>					<b>Mandatory</b>
CSH01	563	Sales Requirement Code	ID	1/2	BK = Ship Partial - Balance Backorder SP = Ship Partial - Balance Cancel
<b>SAC - Service, Promotion, Allowance, or Charge Information</b>					<b>Optional</b>
SAC01	248	Allowance or Charge Indicator	ID	1/1	C = Charge
SAC02	1300	Service, Promotion, Allowance, or Charge Code	ID	4/4	D240 = Freight
SAC05	610	Amount	N2	1/15	Freight Charge

ITD - Terms of Sale / Deferred Terms of Sale					Conditional
					Standard/Required, QQ/Required, Special/Not Required
ITD12	352	Description	AN	1/80	Free Format Terms Description
<b>DTM - Date / Time Reference Delivery Dates (Due Date)</b>					<b>Mandatory</b>
DTM01	374	Date/Time Qualifier	ID	3/3	106 = Required By (Due Date)
DTM02	373	Date	DT	8/8	Shipment/Delivery Related Date Assigned By Menard
<b>DTM - Date / Time Reference Delivery Dates (Other Date)</b>					<b>Optional (0 to Many)</b>
DTM01	374	Date/Time Qualifier	ID	3/3	<b>See Available Codes (Element 374)</b>
DTM02	373	Date	DT	8/8	Shipment/Delivery Related Date Assigned By Menard
<b>TD5 - Carrier Details (Routing Sequence/ Transit Time)</b>					<b>Mandatory</b>
TD504	91	Transportation Method/Type Code	ID	1/2	<b>See Available Codes (Element 91)</b> <b>ZZ = Menard's Preferred Hauler</b>
TD505	387	Routing	AN	1/35	Free-form Routing Instructions
<b>N9 Loop (Special Instructions)</b>					<b>Optional (0 to Many)</b>
<b>N9 - Special Instructions</b>					<b>Mandatory</b>
N901	128	Reference Identification Qualifier	ID	2/3	KD = Special Instructions
N903	369	Free-form Description	AN	1/45	Menard Special Instructions
<b>N1 Loop (Ship To or Bill To/Ship To Information)</b>					<b>Mandatory</b>
<b>N1 - Name</b>					<b>Mandatory</b>
N101	98	Entity Identifier Code	ID	2/2	ST = Ship To, BS = Bill and Ship To
N102	93	Name	NO	4/4	4 Digit Menard Store Number (ie. 3011)
N103	66	Identification Code Qualifier	ID	1/2	92 = Assigned By Buyer
N104	67	Identification Code	AN	4/4	4 Character Menard Store Abbreviation (ie. ECWE)
<b>N2 - Additional Name Information</b>					<b>Mandatory</b>
N201	93	Name	AN	1/35	Menard, Inc.
N202	93	Name	AN	1/35	Store Name Assigned By Menard (ie. Eau Claire West)
<b>N3 - Address Information</b>					<b>Mandatory</b>
N301	166	Address Information (Line 1)	AN	1/35	Store Street Address
N302	166	Address Information (Line 2)	AN	1/35	Store Street Address
<b>N4 - Geographic Location</b>					<b>Mandatory</b>
N401	19	City Name	AN	2/30	Store City Name
N402	156	State or Province Code	ID	2/2	Store State Abbreviation
N403	116	Postal Code	NO	5/9	Store Zip Code
<b>PER - Admin Communications Contact (Ship To Contact Info.)</b>					<b>Mandatory</b>
PER01	366	Contact Function Code	ID	2/2	CN = General Contact
PER03	365	Communication Number Qualifier	ID	2/2	TE = Telephone Number
PER04	364	Communication Number	NO	10/10	General Contact Phone Number
PER03	365	Communication Number Qualifier	ID	2/2	FX = Fax Number
PER04	364	Communication Number	NO	10/10	General Contact Fax Number
<b>N1 Loop (Bill To Information)</b>					<b>Conditional Included if 'Bill To' is different than 'Ship To'</b>
<b>N1 -Name</b>					<b>Mandatory</b>
N101	98	Entity Identifier Code	ID	2/2	BT = Bill To Party
N102	93	Name	NO	4/4	4 Digit Menard Store Number (ie. 3011)
N103	66	Identification Code Qualifier	ID	1/2	92 = Assigned By Buyer
N104	67	Identification Code	AN	4/4	4 Character Menard Store Abbreviation (ie. ECWE)
<b>N2 - Additional Name Information</b>					<b>Mandatory</b>
N201	93	Name	AN	1/35	Menard, Inc.
N202	93	Name	AN	1/35	Store Name Assigned By Menard (ie. Eau Claire West)
<b>N3 - Address Information</b>					<b>Conditional (Not Required for QQ Orders)</b>
N301	166	Address Information (Line 1)	AN	1/35	Store Street Address
N302	166	Address Information (Line 2)	AN	1/35	Store Street Address
<b>N4 - Geographic Location</b>					<b>Conditional (Not Required for QQ Orders)</b>
N401	19	City Name	AN	2/30	Store City Name
N402	156	State or Province Code	ID	2/2	Store State Abbreviation
N403	116	Postal Code	ID	5/9	Store Zip Code

PER - Admin Communications Contact (Bill To Contact Info.)					Conditional (Not Required for QQ Orders)
PER01	366	Contact Function Code	ID	2/2	CN = General Contact
PER03	365	Communication Number Qualifier	ID	2/2	TE = Telephone Number
PER04	364	Communication Number	NO	10/10	General Contact Phone Number
PER03	365	Communication Number Qualifier	ID	2/2	FX = Fax Number
PER04	364	Communication Number	NO	10/10	General Contact Fax Number

<b>N1 Loop (Ordered By Information)</b>					<b>Mandatory</b>
---	--	--	--	--	------------------

<b>N1 -Name</b>					<b>Mandatory</b>
-----------------	--	--	--	--	------------------

N101	98	Entity Identifier Code	ID	2/2	OB = Ordered By
N102	93	Name	NO	4/4	4 Digit Menard Store Number (ie. 3011)
N103	66	Identification Code Qualifier	ID	1/2	92 = Assigned By Buyer
N104	67	Identification Code	AN	4/4	4 Character Menard Store Abbreviation (ie. ECWE)

<b>N2 - Additional Name Information</b>					<b>Mandatory</b>
---	--	--	--	--	------------------

N201	93	Name	AN	1/35	Menard, Inc.
N202	93	Name	AN	1/35	Store Name Assigned By Menard (ie. Eau Claire West)

<b>N3 - Address Information</b>					<b>Conditional (Not Required for QQ Orders)</b>
---------------------------------	--	--	--	--	---

N301	166	Address Information (Line 1)	AN	1/35	Store Street Address
N302	166	Address Information (Line 2)	AN	1/35	Store Street Address

<b>N4 - Geographic Location</b>					<b>Conditional (Not Required for QQ Orders)</b>
---------------------------------	--	--	--	--	---

N401	19	City Name	AN	2/30	Store City Name
N402	156	State or Province Code	ID	2/2	Store State Abbreviation
N403	116	Postal Code	ID	5/9	Store Zip Code

<b>PER - Admin Communications Contact (Ordered By Contact Info.)</b>					<b>Conditional (Not Required for QQ Orders)</b>
--	--	--	--	--	---

PER01	366	Contact Function Code	ID	2/2	CN = General Contact
PER03	365	Communication Number Qualifier	ID	2/2	TE = Telephone Number
PER04	364	Communication Number	NO	10/10	General Contact Phone Number
PER03	365	Communication Number Qualifier	ID	2/2	FX = Fax Number
PER04	364	Communication Number	NO	10/10	General Contact Fax Number

<b>N1 Loop (Customer Information)</b>					<b>Conditional Special Only/Required</b>
---------------------------------------	--	--	--	--	--

<b>N1 -Name</b>					<b>Mandatory</b>
-----------------	--	--	--	--	------------------

N101	98	Entity Identifier Code	ID	2/2	LW = Customer
N102	93	Name	AN	1/35	Full Customer Name

<b>N3 - Address Information</b>					<b>Conditional</b>
---------------------------------	--	--	--	--	--------------------

N301	166	Address Information (Line 1)	AN	1/35	Customer Street Address
N302	166	Address Information (Line 2)	AN	1/35	Customer Street Address

<b>N4 - Geographic Location</b>					<b>Conditional</b>
---------------------------------	--	--	--	--	--------------------

N401	19	City Name	AN	2/30	Customer City
N402	156	State or Province Code	ID	2/2	Customer State
N403	116	Postal Code	ID	5/9	Customer Zip Code

<b>PER - Admin Communications Contact (Customer Contact Info.)</b>					<b>Conditional Special Only/Optional</b>
--	--	--	--	--	--

PER01	366	Contact Function Code	ID	2/2	CN = General Contact
PER03	365	Communication Number Qualifier	ID	2/2	TE = Telephone Number
PER04	364	Communication Number	NO	10/10	General Contact Phone Number

<b>PO1 Loop (Baseline Item Data)</b>					<b>Mandatory (1 to Many)</b>
--------------------------------------	--	--	--	--	----------------------------------

<b>PO1 - Baseline Item Data</b>					<b>Mandatory</b>
---------------------------------	--	--	--	--	------------------

PO101	330	Assigned Sequence Number	R	1/9	Menard Assigned Sequence Number
PO102	330	Quantity Ordered	R	1/9	Quantity Being Ordered (Sum of SDQ for QQ Orders)
PO103	355	Unit or Basis for Measurement	ID	2/2	Menard Ordering Unit
PO104	212	Unit Price	R	1/17	Price Per Unit (ie. 00.000)
PO105	639	Basis of Unit Price Code	ID	2/2	RT = Retail FX = Cost
PO106	235	Product / Service ID Qualifier	ID	2/2	SK = Stock Keeping Unit (SKU)
PO107	234	Product / Service ID	NO	7/7	Menard Assigned SKU

<b>PID Loop (Product / Item Description)</b>					<b>Conditional (0 to Many)</b>
--	--	--	--	--	------------------------------------

<b>PID - Product / Item Description</b>					<b>Mandatory</b>
---	--	--	--	--	------------------

PID01	349	Item Description Code	ID	1/1	F = Free-Form
PID05	352	Description	AN	1/80	Item Description

SDQ Loop (Destination Quantity) - QQ Quantity Allocation						Conditional
						QQ Only/Required (0 to Many)
<b>SDQ - Destination Quantity</b>						<b>Mandatory</b>
SDQ01	355	Unit or Basis for Measurement Code	ID	2/2	2 Character Unit Code	
SDQ03	67	Identification Code	NO	4/4	4 Digit Menard Store Number	
SDQ04	380	Quantity	R	1/15	Quantity Ordered	
SDQ05	67	Identification Code	NO	4/4	4 Digit Menard Store Number	
SDQ06	380	Quantity	R	1/15	Quantity Ordered	
SDQ07	67	Identification Code	NO	4/4	4 Digit Menard Store Number	
SDQ08	380	Quantity	R	1/15	Quantity Ordered	
SDQ09	67	Identification Code	NO	4/4	4 Digit Menard Store Number	
SDQ010	380	Quantity	R	1/15	Quantity Ordered	
SDQ011	67	Identification Code	NO	4/4	4 Digit Menard Store Number	
SDQ012	380	Quantity	R	1/15	Quantity Ordered	
SDQ013	67	Identification Code	NO	4/4	4 Digit Menard Store Number	
SDQ014	380	Quantity	R	1/15	Quantity Ordered	
SDQ015	67	Identification Code	NO	4/4	4 Digit Menard Store Number	
SDQ016	380	Quantity	R	1/15	Quantity Ordered	
SDQ017	67	Identification Code	NO	4/4	4 Digit Menard Store Number	
SDQ018	380	Quantity	R	1/15	Quantity Ordered	
SDQ019	67	Identification Code	NO	4/4	4 Digit Menard Store Number	
SDQ020	380	Quantity	R	1/15	Quantity Ordered	
SDQ021	67	Identification Code	NO	4/4	4 Digit Menard Store Number	
SDQ022	380	Quantity	R	1/15	Quantity Ordered	
<b>CTT - Transaction Totals</b>						<b>Mandatory</b>
CTT01	354	Number Of Line Items	NO	1/6	Total Number Of PO Line Items	
<b>SE - Transaction Set Trailer</b>						<b>Mandatory</b>
SE01	96	Number Of Included Segments	NO	1/10	Total Number Of Segments	
SE02	329	Transaction Set Control Number	NO	4/9	Menard Transaction Set Control Number	
<b>GE - Functional Group Trailer</b>						<b>Mandatory</b>
GE01	97	Number Of Transactions Sets Included	NO	1/6	Total Number Of Transaction Sets	
GE02	28	Group Control Number	NO	1/9	Menard Group Control Number	
<b>IEA - Interchange Control Trailer</b>						<b>Mandatory</b>
IEA01	116	Number Of Included Functional Groups	NO	1/5	Total Number Of Functional Groups	
IEA02	112	Interchange Control Number	NO	9/9	Menard Interchange Control Number	

-----Re vision Notes (02/22/02)-----

**Changes to existing segments:**

BEG BEG02 includes all available codes for element 92 of the X12 4010 standards.  
 FOB FOB01 includes all available codes for element 146 of the X12 4010 standards.  
 FOB FOB02 includes all available codes for element 309 of the X12 4010 standards.  
 DTM DTM01 (Other Date) includes all available codes for element 374 of the X12 4010 standards.  
 TD5 TD504 includes all available codes for element 91 of the X12 4010 standards.  
 PO1 PO101 was added to accommodate the sequence number.  
 PO1 PO105 was added to accommodate the basis of unit price code.  
 N1 Loop Ordered by information (N1, N2, N3, N4)  
 PER Ordered by contact information.  
 N1 Loop Customer information (N1, N2, N3, N4)  
 PER Customer contact information.

-----Re vision Notes (10/06/2003)-----

**Changes to existing segments:**

FOB FOB03 is included for FOB description  
 PER PER - Admin Communication Contact (General Office) - BD (Buyer Name) changed to OC (Order Contact)  
 PER All other PER segments will have CN (General Contact)

**New segments:**

SAC Service, Promotion, Allowance, or Charge Information (Freight Charge)

**Menard, Inc.**  
**ASC X12 (V4010) Mapping Specifications**  
**852 Inbound Product Activity Data (09/23/2002)**

Segment Data		Description	Min/Max		Notes
ID	Elem		Type	Length	
<b>ISA - Interchange Control Header</b>					<b>Mandatory</b>
ISA01	101	Authorization Information Qualifier	ID	2/2	03 = Additional Data Information
ISA02	102	Authorization Information	AN	10/10	Assigned Menard Authorization ID
ISA03	103	Security Information Qualifier	ID	2/2	01 = Password
ISA04	104	Security Information	AN	10/10	Assigned Menard Security Password
ISA05	105	Interchange ID Qualifier	ID	2/2	Trading Partner's ID Qualifier
ISA06	106	Interchange Sender ID	AN	15/15	Trading Partner's ID
ISA07	105	Interchange ID Qualifier	ID	2/2	01 = Duns (Dun & Bradstreet)
ISA08	107	Interchange Receiver ID	AN	15/15	Menards Duns Number + (T or P)
ISA09	108	Interchange Date	DT	6/6	YYMMDD
ISA10	109	Interchange Time	TM	4/4	HHMM
ISA11	110	Interchange Control Standards Identifier	ID	1/1	U = ASC X12
ISA12	111	Interchange Control Version Number	ID	5/5	00401
ISA13	112	Interchange Control Number	NO	9/9	Trading Partner Interchange Control Number
ISA14	113	Acknowledgment Requested	ID	1/1	0 = No Ack (TA1) Requested
ISA15	114	Test Indicator	ID	1/1	P = Production Data T = Test Data
ISA16	115	Component Element Separator	AN	1/1	>
<b>GS - Functional Group Header</b>					<b>Mandatory</b>
GS01	479	Functional Identifier Code	ID	2/2	PD = Product Activity Data
GS02	142	Application Sender's Code	AN	2/15	Trading Partner's Identifier
GS03	124	Application Receiver's Code	AN	2/15	Menard Duns Number + (Q)
GS04	373	Date	DT	8/8	YYYYMMDD
GS05	337	Time	TM	4/8	HHMM
GS06	28	Group Control Number	NO	1/9	Trading Partner Group Control Number
GS07	455	Responsible Agency Code	ID	1/2	X = ASC X12
GS08	480	Version/ Release/Industry Identifier Code	AN	1/12	004010
<b>ST - Transaction Set Header</b>					<b>Mandatory</b>
ST01	143	Transaction Set Identifier Code	ID	3/3	852 = X12.1 Product Activity Data
ST02	329	Transaction Set Control Number	NO	4/9	Trading Partner Transaction Set Control Number
<b>XQ - Reporting Date/Action</b>					<b>Mandatory</b>
XQ01	305	Transaction Handling Code	ID	1/2	F = Plan and Submit Suggested Purchase Orders
XQ02	373	Date	DT	8/8	Document Date (sent weekly)
<b>LIN Loop (Item Identification)</b>					<b>Mandatory</b>
LIN01	350	Assigned Identification	AN	1/20	Sequence Number Starting at 1
LIN02	235	Product/Service ID Qualifier	ID	2/2	SK = Stock Keeping Unit (SKU)
LIN03	234	Product/Service ID	AN	1/48	SKU Assigned by Menard
<b>ZA Loop (Product Activity Reporting)</b>					<b>Conditional (1 to many)</b>
<b>ZA Loop (Product Activity Reporting)</b>					<b>Mandatory</b>
ZA 01	859	Activity Code	ID	2/2	PO = Calculated Reorder Point

<b>SDQ Loop (Destination Quantity) - QQ Quantity Allocation</b>					<b>Conditional (1 to many)</b>
<b>SDQ - Destination Quantity</b>					<b>Mandatory</b>
SDQ01	355	Unit or Basis for Measurement Code	ID	2/2	2 Character Unit Code
SDQ03	67	Identification Code	AN	2/80	4 Digit Store Number
SDQ04	380	Quantity	R	1/15	Quantity
SDQ05	67	Identification Code	AN	2/80	4 Digit Store Number
SDQ06	380	Quantity	R	1/15	Quantity
SDQ07	67	Identification Code	AN	2/80	4 Digit Store Number
SDQ08	380	Quantity	R	1/15	Quantity
SDQ09	67	Identification Code	AN	2/80	4 Digit Store Number
SDQ010	380	Quantity	R	1/15	Quantity
SDQ011	67	Identification Code	AN	2/80	4 Digit Store Number
SDQ012	380	Quantity	R	1/15	Quantity
SDQ013	67	Identification Code	AN	2/80	4 Digit Store Number
SDQ014	380	Quantity	R	1/15	Quantity
SDQ015	67	Identification Code	AN	2/80	4 Digit Store Number
SDQ016	380	Quantity	R	1/15	Quantity
SDQ017	67	Identification Code	AN	2/80	4 Digit Store Number
SDQ018	380	Quantity	R	1/15	Quantity
SDQ019	67	Identification Code	AN	2/80	4 Digit Store Number
SDQ020	380	Quantity	R	1/15	Quantity
SDQ021	67	Identification Code	AN	2/80	4 Digit Store Number
SDQ022	380	Quantity	R	1/15	Quantity
<b>CTT - Transaction Totals</b>					<b>Mandatory</b>
CTT01	354	Number Of Line Items	NO	1/6	Total Number Of Line Items
<b>SE - Transaction Set Trailer</b>					<b>Mandatory</b>
SE01	96	Number Of Included Segments	NO	1/10	Total Number Of Segments
SE02	329	Transaction Set Control Number	NO	4/9	Trading Partner Transaction Set Control Number
<b>GE - Functional Group Trailer</b>					<b>Mandatory</b>
GE01	97	Number Of Transactions Sets Included	NO	1/6	Total Number Of Transaction Sets
GE02	28	Group Control Number	NO	1/9	Trading Partner Group Control Number
<b>IEA - Interchange Control Trailer</b>					<b>Mandatory</b>
IEA01	116	Number Of Included Functional Groups	NO	1/5	Total Number Of Functional Groups
IEA02	112	Interchange Control Number	NO	9/9	Trading Partner Interchange Control Number



## Example Data – 852 Outbound

ISA\*03\*XXXXXXXX \*01\*XXXXXXXX \*01\*006203210P \*01\*XXXXXXXX \*050403\*0800\*U\*00401\*000010877\*0\*P\*>~  
GS\*PD\*006203210\*XXXXXXXX\*20050403\*0800\*538\*X\*004010~  
ST\*852\*0001~  
XQ\*F\*20050402~  
LIN\*1\*SK\*XXXXXXXX~  
ZA\*QA~  
SDQ\*EA\*\*3011\*3\*3012\*2\*3013\*3\*3015\*2\*3016\*2\*3018\*3\*3020\*4\*3021\*0\*3022\*3\*3024\*2~  
SDQ\*EA\*\*3025\*3\*3026\*3\*3027\*4\*3028\*2\*3030\*1\*3031\*4\*3032\*3\*3033\*3\*3034\*1\*3036\*3~  
SDQ\*EA\*\*3037\*2\*3040\*2\*3041\*3\*3042\*3\*3043\*3\*3044\*3\*3045\*3\*3046\*4\*3047\*3\*3050\*3~  
SDQ\*EA\*\*3051\*2\*3052\*3\*3053\*3\*3054\*1\*....  
ZA\*QP~  
SDQ\*EA\*\*3011\*0\*3012\*0\*3013\*0\*3015\*0\*3016\*0\*3018\*0\*3020\*0\*3021\*2\*3022\*0\*3024\*0~  
SDQ\*EA\*\*3025\*0\*3026\*0\*3027\*0\*3028\*0\*3030\*1\*3031\*0\*3032\*1\*3033\*0\*3034\*0\*3036\*0~  
SDQ\*EA\*\*3037\*0\*3040\*0\*3041\*0\*3042\*0\*3043\*0\*3044\*0\*3045\*0\*3046\*0\*3047\*0\*3050\*0~  
SDQ\*EA\*\*3051\*0\*3052\*0\*3053\*0\*3054\*2\*....  
ZA\*QS~  
SDQ\*EA\*\*3011\*0\*3012\*0\*3013\*3\*3015\*3\*3016\*0\*3018\*0\*3020\*3\*3021\*0\*3022\*0\*3024\*0~  
SDQ\*EA\*\*3025\*0\*3026\*2\*3027\*2\*3028\*0\*3030\*0\*3031\*0\*3032\*0\*3033\*2\*3034\*0\*3036\*0~  
SDQ\*EA\*\*3037\*0\*3040\*1\*3041\*0\*3042\*0\*3043\*2\*3044\*0\*3045\*0\*3046\*0\*3047\*0\*3050\*0~  
SDQ\*EA\*\*3051\*0\*3052\*0\*3053\*0\*3054\*0\*....  
ZA\*QR~  
SDQ\*EA\*\*3011\*0\*3012\*8\*3013\*0\*3015\*0\*3016\*0\*3018\*0\*3020\*0\*3021\*0\*3022\*0\*3024\*0~  
SDQ\*EA\*\*3025\*0\*3026\*0\*3027\*0\*3028\*5\*3030\*0\*3031\*0\*3032\*0\*3033\*0\*3034\*0\*3036\*0~  
SDQ\*EA\*\*3037\*0\*3040\*0\*3041\*0\*3042\*0\*3043\*0\*3044\*0\*3045\*0\*3046\*0\*3047\*0\*3050\*0~  
SDQ\*EA\*\*3051\*0\*3052\*3\*3053\*0\*3054\*0\*....  
LIN\*2\*SK\*4150405~  
ZA\*QA~  
SDQ\*EA\*\*3011\*5\*3012\*2\*3013\*2\*3015\*2\*3016\*1\*3018\*1\*3020\*2\*3021\*-1\*3022\*1\*3024\*1~  
SDQ\*EA\*\*3025\*2\*3026\*6\*3027\*4\*3028\*4\*3030\*1\*3031\*4\*3032\*4\*3033\*2\*3034\*2\*3036\*1~  
SDQ\*EA\*\*3037\*0\*3040\*4\*3041\*1\*3042\*4\*3043\*3\*3044\*1\*3045\*6\*3046\*5\*3047\*1\*3050\*4~  
SDQ\*EA\*\*3051\*2\*3052\*1\*3053\*3\*3054\*3\*....  
ZA\*QP~  
SDQ\*EA\*\*3011\*0\*3012\*0\*3013\*0\*3015\*0\*3016\*1\*3018\*1\*3020\*0\*3021\*1\*3022\*1\*3024\*1~  
SDQ\*EA\*\*3025\*0\*3026\*0\*3027\*0\*3028\*0\*3030\*1\*3031\*0\*3032\*0\*3033\*0\*3034\*0\*3036\*0~  
SDQ\*EA\*\*3037\*0\*3040\*0\*3041\*0\*3042\*0\*3043\*0\*3044\*1\*3045\*0\*3046\*0\*3047\*0\*3050\*0~  
SDQ\*EA\*\*3051\*0\*3052\*1\*3053\*0\*3054\*0\*....  
ZA\*QS~  
SDQ\*EA\*\*3011\*0\*3012\*0\*3013\*0\*3015\*1\*3016\*6\*3018\*0\*3020\*0\*3021\*0\*3022\*0\*3024\*0~  
SDQ\*EA\*\*3025\*0\*3026\*0\*3027\*0\*3028\*0\*3030\*0\*3031\*0\*3032\*0\*3033\*1\*3034\*0\*3036\*1~  
SDQ\*EA\*\*3037\*2\*3040\*1\*3041\*1\*3042\*0\*3043\*0\*3044\*0\*3045\*1\*3046\*1\*3047\*0\*3050\*0~  
SDQ\*EA\*\*3051\*0\*3052\*0\*3053\*0\*3054\*0\*....  
ZA\*QR~  
SDQ\*EA\*\*3011\*0\*3012\*0\*3013\*0\*3015\*0\*3016\*0\*3018\*0\*3020\*0\*3021\*0\*3022\*0\*3024\*0~  
SDQ\*EA\*\*3025\*4\*3026\*0\*3027\*0\*3028\*0\*3030\*0\*3031\*0\*3032\*0\*3033\*0\*3034\*0\*3036\*0~  
SDQ\*EA\*\*3037\*0\*3040\*0\*3041\*0\*3042\*0\*3043\*0\*3044\*0\*3045\*0\*3046\*0\*3047\*0\*3050\*0~  
SDQ\*EA\*\*3051\*0\*3052\*0\*3053\*0\*3054\*0\*....  
CTT\*2~  
SE\*46\*0001~  
GE\*1\*538~  
IEA\*1\*000010877~





## Example Data – 855 Inbound

ISA\*01\*XXXXXXXX \*03\*XXXXXXXX \*01\*XXXXXXXX \*01\*006203210P \*050401\*1157\*U\*00401\*100000300\*0\*P\*>~  
GS\*PR\*XXXXXXXX\*006203210\*20050401\*1157\*100000300\*X\*004010~  
ST\*855\*100010827~  
BAK\*00\*AP\*10967\*20050401~  
DTM\*010\*20050406~  
N1\*ST\*Menard, Inc.\*92\*3013~  
PO1\*1\*1\*EA\*\*\*SK\*XXXXXXXX~  
PO1\*2\*3\*EA\*\*\*SK\*XXXXXXY~  
PO1\*3\*1\*EA\*\*\*SK\*XXXXXXZ~  
PO1\*4\*5\*EA\*\*\*SK\*XXXXXXA~  
PO1\*5\*4\*EA\*\*\*SK\*XXXXXXB~  
CTT\*5~  
SE\*11\*100010827~  
ST\*855\*100010828~  
BAK\*00\*AP\*10968\*20050401~  
DTM\*010\*20050406~  
N1\*ST\*Menard, Inc.\*92\*3020~  
PO1\*1\*1\*EA\*\*\*SK\*XXXXXXXX~  
PO1\*2\*1\*EA\*\*\*SK\*XXXXXXY~  
PO1\*3\*2\*EA\*\*\*SK\*XXXXXXZ~  
PO1\*4\*2\*EA\*\*\*SK\*XXXXXXA~  
PO1\*5\*6\*EA\*\*\*SK\*XXXXXXB~  
PO1\*6\*1\*EA\*\*\*SK\*XXXXXXC~  
PO1\*7\*3\*EA\*\*\*SK\*XXXXXXD~  
PO1\*8\*4\*EA\*\*\*SK\*XXXXXXE~  
PO1\*9\*1\*EA\*\*\*SK\*XXXXXXF~  
PO1\*10\*1\*EA\*\*\*SK\*XXXXXXG~  
PO1\*11\*7\*EA\*\*\*SK\*XXXXXXH~  
PO1\*12\*19\*EA\*\*\*SK\*XXXXXXI~  
PO1\*13\*5\*EA\*\*\*SK\*XXXXXXJ~  
PO1\*14\*4\*EA\*\*\*SK\*XXXXXXK~  
CTT\*14~  
SE\*20\*100010828~  
GE\*2\*100000300~  
IEA\*1\*100000300~



## Example Data – 850 Outbound

ISA\*03\*XXXXXXXX \*01\*XXXXXXXX \*01\*006203210P \*01\*XXXXXXXX \*050401\*0938\*U\*00401\*000010844\*0\*P\*>~  
GS\*PO\*006203210\*XXXXXXXX\*20050402\*0938\*9979\*X\*004010~  
ST\*850\*0001~  
BEG\*00\*SA\*ROCS59342634\*\*20050402~  
REF\*VN\*10967~  
PER\*OC\*Jon Klink\*TE\*7158762056~  
FOB\*PP\*DE\*MENARD~  
CSH\*SP~  
ITD\*\*\*\*\*NET 30 DAYS~  
DTM\*106\*20050407~  
TD5\*\*\*T\*BESTWAY~  
N1\*BS\*3013\*92\*ROCS~  
N2\*Menard, Inc.\*ROCHESTER SOUTH~  
N3\*3000 South Broadway~  
N4\*Rochester\*MN\*55904-5598~  
PER\*CN\*\*TE\*5072528838\*FX\*5072529027~  
N1\*OB\*3013\*92\*ROCS~  
N2\*Menard, Inc.\*ROCHESTER SOUTH~  
N3\*3000 South Broadway~  
N4\*Rochester\*MN\*55904-5598~  
PER\*CN\*\*TE\*5072528838\*FX\*5072529027~  
PO1\*1\*1\*EA\*XX.XX\*FX\*SK\*XXXXXXXX~  
PID\*F\*\*\*\*DESCRIPTION 1~  
PID\*F\*\*\*\*DESCRIPTION 2~  
PO1\*2\*3\*EA\*XX.XX\*FX\*SK\*XXXXXXY~  
PID\*F\*\*\*\*DESCRIPTION 1~  
PID\*F\*\*\*\*DESCRIPTION 2~  
PO1\*3\*5\*EA\*XX.XX\*FX\*SK\*XXXXXXA~  
PID\*F\*\*\*\*DESCRIPTION 1~  
PID\*F\*\*\*\*DESCRIPTION 2~  
PO1\*4\*4\*EA\*XX.XX4\*FX\*SK\*XXXXXXB~  
PID\*F\*\*\*\*DESCRIPTION 1~  
PID\*F\*\*\*\*DESCRIPTION 2~  
CTT\*4~  
SE\*33\*0001~  
GE\*1\*9979~  
IEA\*1\*000010844~



## Example Data – 852 Inbound

ISA\*00\*XXXXXXXX \*00\*XXXXXXXX \*01\*XXXXXXXX \*01\*006203210P \*050328\*1521\*U\*00401\*200000077\*0\*P\*>~  
GS\*PD\*XXXXXXXX\*006203210\*20050328\*1521\*200000077\*X\*004010~  
ST\*852\*200000077~  
XQ\*F\*20050328~  
LIN\*1\*SK\*XXXXXXXX~  
ZA\*PO~  
SDQ\*EA\*\*3011\*2\*3012\*3\*3013\*2\*3015\*2\*3016\*3\*3018\*2\*3020\*2\*3021\*2\*3022\*3\*3024\*2~  
SDQ\*EA\*\*3025\*2\*3026\*2\*3027\*2\*3028\*2\*3030\*2\*3031\*2\*3032\*3\*3033\*2\*3034\*2\*3036\*2~  
SDQ\*EA\*\*3037\*2\*3040\*3\*3041\*2\*3042\*2\*3043\*2\*3044\*2\*3045\*3\*3046\*4\*3047\*2\*3050\*2~  
SDQ\*EA\*\*3051\*2\*3052\*2\*3053\*2\*3054\*2\*...  
LIN\*2\*SK\*XXXXXXXXY~  
ZA\*PO~  
SDQ\*EA\*\*3011\*5\*3012\*2\*3013\*2\*3015\*2\*3016\*2\*3018\*5\*3020\*2\*3021\*2\*3022\*2\*3024\*2~  
SDQ\*EA\*\*3025\*2\*3026\*5\*3027\*2\*3028\*2\*3030\*5\*3031\*3\*3032\*2\*3033\*3\*3034\*2\*3036\*2~  
SDQ\*EA\*\*3037\*2\*3040\*3\*3041\*2\*3042\*3\*3043\*2\*3044\*2\*3045\*3\*3046\*4\*3047\*2\*3050\*2~  
SDQ\*EA\*\*3051\*2\*3052\*2\*3053\*2\*3054\*2\*...  
LIN\*3\*SK\*XXXXXXXXZ~  
ZA\*PO~  
SDQ\*EA\*\*3011\*2\*3012\*2\*3013\*2\*3015\*2\*3016\*2\*3018\*2\*3020\*2\*3021\*2\*3022\*2\*3024\*2~  
SDQ\*EA\*\*3025\*2\*3026\*2\*3027\*2\*3028\*2\*3030\*2\*3031\*2\*3032\*2\*3033\*2\*3034\*2\*3036\*2~  
SDQ\*EA\*\*3037\*2\*3040\*6\*3041\*2\*3042\*2\*3043\*2\*3044\*2\*3045\*2\*3046\*2\*3047\*2\*3050\*2~  
SDQ\*EA\*\*3051\*2\*3052\*2\*3053\*2\*3054\*2\*...  
LIN\*4\*SK\*XXXXXXXXA~  
ZA\*PO~  
SDQ\*EA\*\*3011\*2\*3012\*2\*3013\*2\*3015\*3\*3016\*2\*3018\*2\*3020\*2\*3021\*2\*3022\*2\*3024\*2~  
SDQ\*EA\*\*3025\*3\*3026\*2\*3027\*2\*3028\*2\*3030\*2\*3031\*3\*3032\*2\*3033\*2\*3034\*2\*3036\*2~  
SDQ\*EA\*\*3037\*2\*3040\*2\*3041\*3\*3042\*2\*3043\*2\*3044\*2\*3045\*3\*3046\*2\*3047\*2\*3050\*2~  
SDQ\*EA\*\*3051\*2\*3052\*2\*3053\*2\*3054\*2\*...  
LIN\*5\*SK\*XXXXXXXXB~  
ZA\*PO~  
SDQ\*EA\*\*3011\*2\*3012\*3\*3013\*2\*3015\*2\*3016\*2\*3018\*3\*3020\*3\*3021\*3\*3022\*2\*3024\*2~  
SDQ\*EA\*\*3025\*2\*3026\*2\*3027\*2\*3028\*3\*3030\*2\*3031\*2\*3032\*2\*3033\*2\*3034\*2\*3036\*2~  
SDQ\*EA\*\*3037\*3\*3040\*2\*3041\*2\*3042\*2\*3043\*3\*3044\*2\*3045\*2\*3046\*2\*3047\*2\*3050\*2~  
SDQ\*EA\*\*3051\*2\*3052\*2\*3053\*2\*3054\*2\*...  
CTT\*5~  
SE\*34\*200000077~  
GE\*1\*200000077~  
IEA\*1\*200000077~